

## RESEARCH ARTICLE SUMMARY

## CORTICAL GENETICS

## The genetic architecture of the human cerebral cortex

Katrina L. Grasby\*† and Neda Jahanshad\*† et al.

**INTRODUCTION:** The cerebral cortex underlies our complex cognitive capabilities. Variations in human cortical surface area and thickness are associated with neurological, psychological, and behavioral traits and can be measured in vivo by magnetic resonance imaging (MRI). Studies in model organisms have identified genes that influence cortical structure, but little is known about common genetic variants that affect human cortical structure.

**RATIONALE:** To identify genetic variants associated with human cortical structure at both global and regional levels, we conducted a genome-wide association meta-analysis of brain MRI data from 51,665 individuals across 60 cohorts. We analyzed the surface area and

average thickness of the whole cortex and 34 cortical regions with known functional specializations.

**RESULTS:** We identified 306 nominally genome-wide significant loci ( $P < 5 \times 10^{-8}$ ) associated with cortical structure in a discovery sample of 33,992 participants of European ancestry. Of the 299 loci for which replication data were available, 241 loci influencing surface area and 14 influencing thickness remained significant after replication, with 199 loci passing multiple testing correction ( $P < 8.3 \times 10^{-10}$ ; 187 influencing surface area and 12 influencing thickness).

Common genetic variants explained 34% (SE = 3%) of the variation in total surface area

and 26% (SE = 2%) in average thickness; surface area and thickness showed a negative genetic correlation ( $r_G = -0.32$ , SE = 0.05,  $P = 6.5 \times 10^{-12}$ ), which suggests that genetic influences have opposing effects on surface area and thickness. Bioinformatic analyses showed that total surface area is influenced by genetic variants that alter gene regulatory activity in neural progenitor cells during fetal development.

## ON OUR WEBSITE

Read the full article at <http://dx.doi.org/10.1126/science.aay6690>

By contrast, average thickness is influenced by active regulatory elements in adult brain samples, which may reflect processes that occur after mid-fetal development, such as myelination, branching, or pruning.

When considered together, these results support the radial unit hypothesis that different developmental mechanisms promote surface area expansion and increases in thickness.

To identify specific genetic influences on individual cortical regions, we controlled for global measures (total surface area or average thickness) in the regional analyses. After multiple testing correction, we identified 175 loci that influence regional surface area and 10 that influence regional thickness. Loci that affect regional surface area cluster near genes involved in the Wnt signaling pathway, which is known to influence areal identity.

We observed significant positive genetic correlations and evidence of bidirectional causation of total surface area with both general cognitive functioning and educational attainment. We found additional positive genetic correlations between total surface area and Parkinson's disease but did not find evidence of causation. Negative genetic correlations were evident between total surface area and insomnia, attention deficit hyperactivity disorder, depressive symptoms, major depressive disorder, and neuroticism.

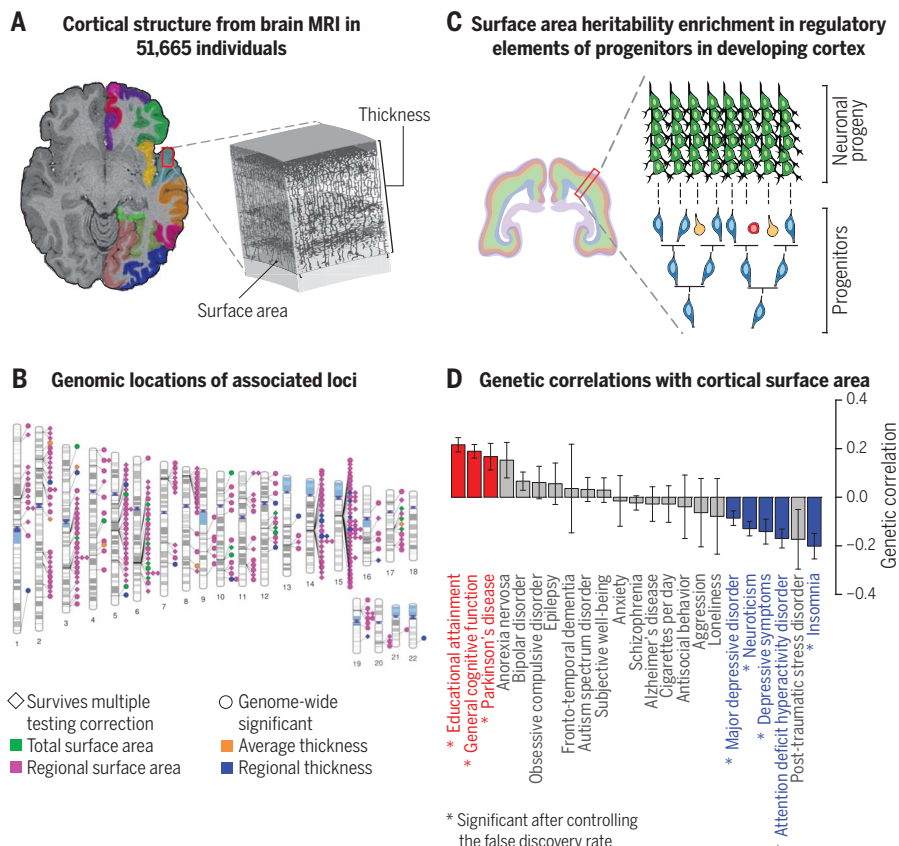
**CONCLUSION:** This large-scale collaborative work enhances our understanding of the genetic architecture of the human cerebral cortex and its regional patterning. The highly polygenic architecture of the cortex suggests that distinct genes are involved in the development of specific cortical areas. Moreover, we find evidence that brain structure is a key phenotype along the causal pathway that leads from genetic variation to differences in general cognitive function. ■

The complete list of authors and affiliations is available in the full article online.

\*Corresponding authors: Katrina L. Grasby ([katrina.grasby@qimrberghofer.edu.au](mailto:katrina.grasby@qimrberghofer.edu.au)); Neda Jahanshad ([njahansh@usc.edu](mailto:njahansh@usc.edu)); Jason L. Stein ([jason\\_stein@med.unc.edu](mailto:jason_stein@med.unc.edu)); Paul M. Thompson ([pthomp@usc.edu](mailto:pthomp@usc.edu)); Sarah E. Medland ([sarah.medland@qimrberghofer.edu.au](mailto:sarah.medland@qimrberghofer.edu.au))

†These authors contributed equally to this work.

Cite this article as K. L. Grasby et al., *Science* 367, eaay6690 (2020). DOI: 10.1126/science.aay6690



**Identifying genetic influences on human cortical structure.** (A) Measurement of cortical surface area and thickness from MRI. (B) Genomic locations of common genetic variants that influence global and regional cortical structure. (C) Our results support the radial unit hypothesis that the expansion of cortical surface area is driven by proliferating neural progenitor cells. (D) Cortical surface area shows genetic correlation with psychiatric and cognitive traits. Error bars indicate SE.

## RESEARCH ARTICLE

## CORTICAL GENETICS

## The genetic architecture of the human cerebral cortex

All authors and their affiliations appear at the end of this paper.

The cerebral cortex underlies our complex cognitive capabilities, yet little is known about the specific genetic loci that influence human cortical structure. To identify genetic variants that affect cortical structure, we conducted a genome-wide association meta-analysis of brain magnetic resonance imaging data from 51,665 individuals. We analyzed the surface area and average thickness of the whole cortex and 34 regions with known functional specializations. We identified 199 significant loci and found significant enrichment for loci influencing total surface area within regulatory elements that are active during prenatal cortical development, supporting the radial unit hypothesis. Loci that affect regional surface area cluster near genes in Wnt signaling pathways, which influence progenitor expansion and areal identity. Variation in cortical structure is genetically correlated with cognitive function, Parkinson's disease, insomnia, depression, neuroticism, and attention deficit hyperactivity disorder.

The human cerebral cortex is the outer gray matter layer of the brain and is implicated in multiple aspects of higher cognitive function. Its distinctive folding pattern is characterized by convex (gyral) and concave (sulcal) regions. Computational brain mapping approaches use the consistent folding patterns across individual cortices to label brain regions (1). During fetal development, excitatory neurons—the predominant neuronal cell type in the cortex—are generated from neural progenitor cells in the developing germinal zone (2). The radial unit hypothesis (3) posits that the expansion of cortical surface area (SA) is driven by the proliferation of these neural progenitor cells, whereas thickness (TH) is determined by the number of their neurogenic divisions. Variation in global and regional measures of cortical SA and TH have been reliably associated with neuropsychiatric disorders and psychological traits (4) (table S1). Twin and family-based brain imaging studies indicate that SA and TH measurements are highly heritable and are influenced by largely different genetic factors (5–7). Despite extensive studies of genes affecting cortical structure in model organisms, our current understanding of the genetic variation affecting human cortical size and patterning is limited to rare, highly penetrant variants (8, 9). These variants often disrupt cortical development, leading to altered postnatal structure. However, little is known about how common genetic variants influence human cortical SA and TH.

To identify genetic loci associated with variation in the human cortex, we conducted genome-wide association meta-analyses of cortical SA and TH measures in 51,665 individuals, primarily (~94%) of European descent, from 60 cohorts from around the world (tables S2 to S4). Cortical measures were extracted from structural brain magnetic resonance imaging (MRI) scans in 34 regions defined

by the commonly used Desikan-Killiany atlas, which establishes coarse partitions of the cortex. The regional boundaries are based on gyral anatomy labeled from between the depths of the sulci (10, 11). We analyzed two global measures, total SA and average TH, as well as SA and TH for the 34 regions averaged across both hemispheres, yielding 70 distinct phenotypes (Fig. 1A and table S1).

Within each cohort, we used an additive model to conduct a genome-wide association study (GWAS) for each of the 70 phenotypes. To identify genetic influences specific to each region, the primary GWAS of regional measures included the global measure of SA or TH as a covariate. To estimate the multiple testing burden associated with analyzing 70 phenotypes, we used matrix spectral decomposition (12), which yielded 60 independent traits, and a multiple testing significance threshold of  $P \leq 8.3 \times 10^{-10}$ .

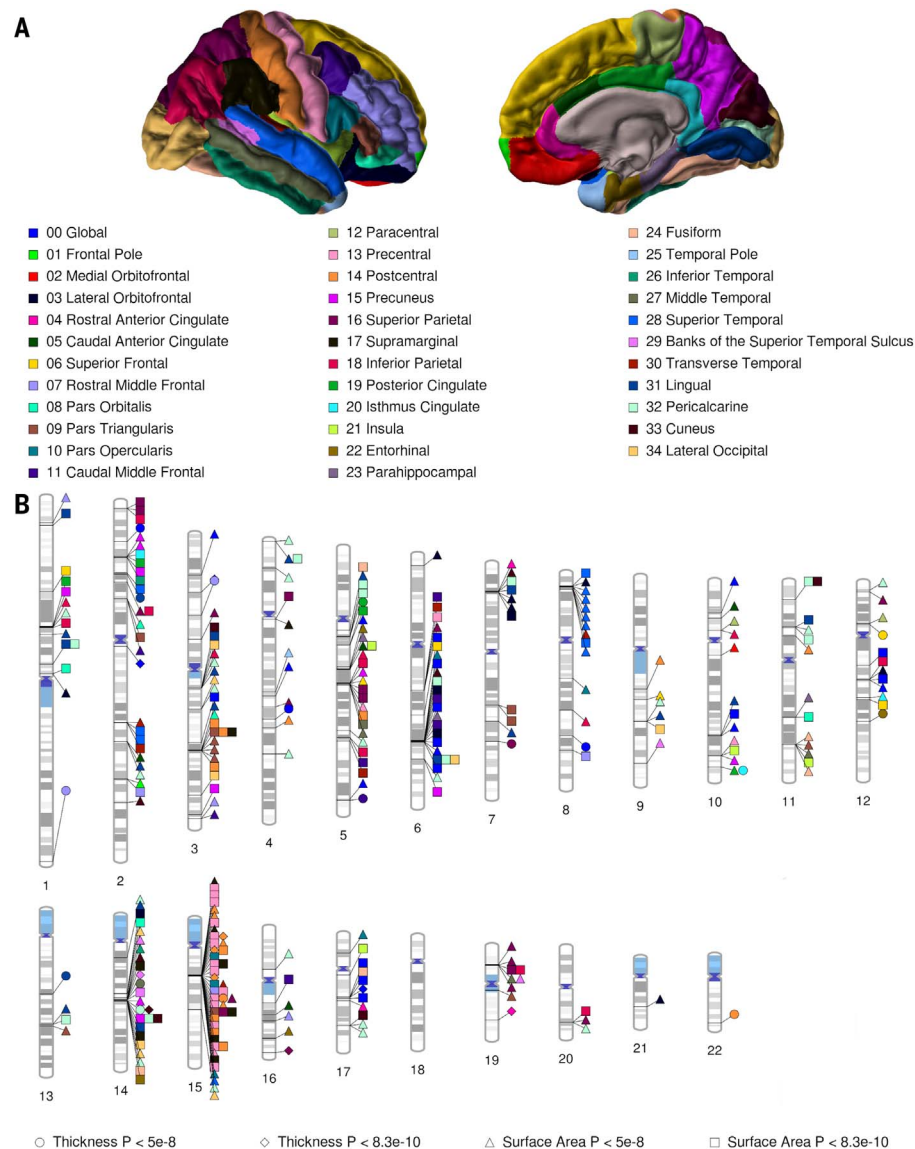
The principal meta-analysis comprised results from 33,992 participants of European ancestry (23,909 from 49 cohorts participating in the ENIGMA consortium and 10,083 from the UK Biobank). We sought replication for loci reaching genome-wide significance ( $P \leq 5 \times 10^{-8}$ ) in an additional ENIGMA cohort (777 participants) and the CHARGE consortium (13,952 participants). In addition, we meta-analyzed eight cohorts of non-European ancestry (2944 participants) to examine the generalization of these effects across ancestries. High genetic correlations were observed between the meta-analyzed ENIGMA European cohorts and the UK Biobank cohort using linkage disequilibrium (LD) score regression (total SA  $r_G = 1.00$ ,  $z$ -score  $P_{TG} = 2.7 \times 10^{-27}$ ; average TH  $r_G = 0.91$ ,  $z$ -score  $P_{TG} = 1.7 \times 10^{-19}$ ), indicating consistent genetic architecture between the 49 ENIGMA cohorts and data collected from a single scanner at the primary UK Biobank imaging site.

Across the 70 cortical phenotypes, we identified 306 loci that were genome-wide significant in the principal meta-analysis ( $P \leq 5 \times 10^{-8}$ ) (Fig. 1B and table S5). Of these, 118 have not been previously associated with either intracranial volume (ICV) or cortical SA, TH, or volume (13–18). Twenty of these loci were insertions or deletions (INDELs). Eleven INDELs had a proxy single-nucleotide polymorphism (SNP) available in the European replication data; no proxies were available for six INDELs and one SNP. Of the 299 loci for which the SNP or a proxy was available, 255 (SA: 241, TH: 14) remained genome-wide significant when the replication data were included in the meta-analysis, with 199 passing multiple testing correction ( $P \leq 8.3 \times 10^{-10}$ ; SA: 187, TH: 12). Of the 255 loci, 244 were available in the meta-analysis of non-European cohorts. The 95% confidence intervals (CIs) around the non-European meta-analysis effect sizes included those from the European meta-analysis for 241 of these loci. Of the 244 loci available in the non-European cohorts, 189 had effects in the same direction in both the European and non-European meta-analyses, and 111 became more significant when the whole sample was meta-analyzed (table S5 and fig. S1). Variability in effects across ancestry may be due to differences in allele frequency; however, the power for these comparisons is limited, and further comparisons with larger non-European cohorts will help clarify the generalizability of these effects (table S5). We examined gene-based effects (allowing for a 50-kb window around genes) and found significant associations for 253 genes across the 70 cortical phenotypes (table S6). The meta-analytic results are summarized as Manhattan, QQ, Forest, and LocusZoom plots (figs. S2 to S5).

## Genetics of total SA and average TH

Common variants explained 34% (SE = 3%) of the variation in total SA and 26% (SE = 2%) in average TH. These estimates account for more than a third of the heritability estimated from the Queensland Twin Imaging cohort (91% for total SA and 64% for average TH) (table S7), indicating that more genetic variants, including rare variants, are yet to be identified. To examine the extent to which our results could predict SA and TH, we derived polygenic risk scores (PRSs) from the principal meta-analysis results. These scores significantly predicted SA and TH in an independent sample of 5095 European participants, explaining between 2 and 3% of the trait variance (given a PRS threshold of  $P \leq 0.01$   $R^2_{SA} = 0.029$ , linear regression coefficient  $t$  test  $P = 6.54 \times 10^{-50}$ ;  $R^2_{TH} = 0.022$ ,  $t$  test  $P = 3.34 \times 10^{-33}$ ) (table S8).

We observed a significant negative genetic correlation between total SA and average TH ( $r_G = -0.32$ , SE = 0.05,  $z$ -score  $P_{TG} = 6.5 \times 10^{-12}$ ) (Fig. 2A), which persisted after exclusion of



**Fig. 1. Regions of the human cortex and associated genetic loci.** (A) The 34 cortical regions defined by the Desikan-Killiany atlas. (B) Ideogram of loci that influence cortical SA and TH.

the chromosome 17 inversion region known to influence brain size (14) ( $r_G = -0.31$ ,  $SE = 0.05$ ,  $z\text{-score } P_{TG} = 3.3 \times 10^{-12}$ ). Genetic correlations could indicate causal relationships between traits, pleiotropy, or a genetic mediator influencing both traits. Latent causal variable (LCV) analysis, which tests for causality using genome-wide data (19), showed no evidence of causation [LCV genetic causality proportion ( $gcp$ ) = 0.06,  $t$  test  $P_{gcp=0} = 0.729$ ]. The negative correlation suggests that genetic influences have opposing effects on SA and TH, which may result from pleiotropic effects or genetic effects on a mediating trait that, for example, might constrain total cortical volume. The absence of causality and the small magnitude of this correlation are consistent with the radial unit hypothesis (3), whereby different devel-

opmental mechanisms promote SA expansion and increases in TH.

As expected, total SA showed a positive genetic correlation with ICV. This correlation remained after controlling for height, which demonstrates that this relationship is not solely driven by body size (Fig. 2A and table S8). The global cortical measures did not show significant genetic correlations with the volumes of major subcortical structures (Fig. 2A). The genetic correlation between total SA and the hippocampus is consistent with their shared telencephalic developmental origin.

To identify whether common variation associated with cortical structure relates to gene regulation within a given tissue type, developmental time period, or cell type, we performed partitioned heritability analyses (20) using sets

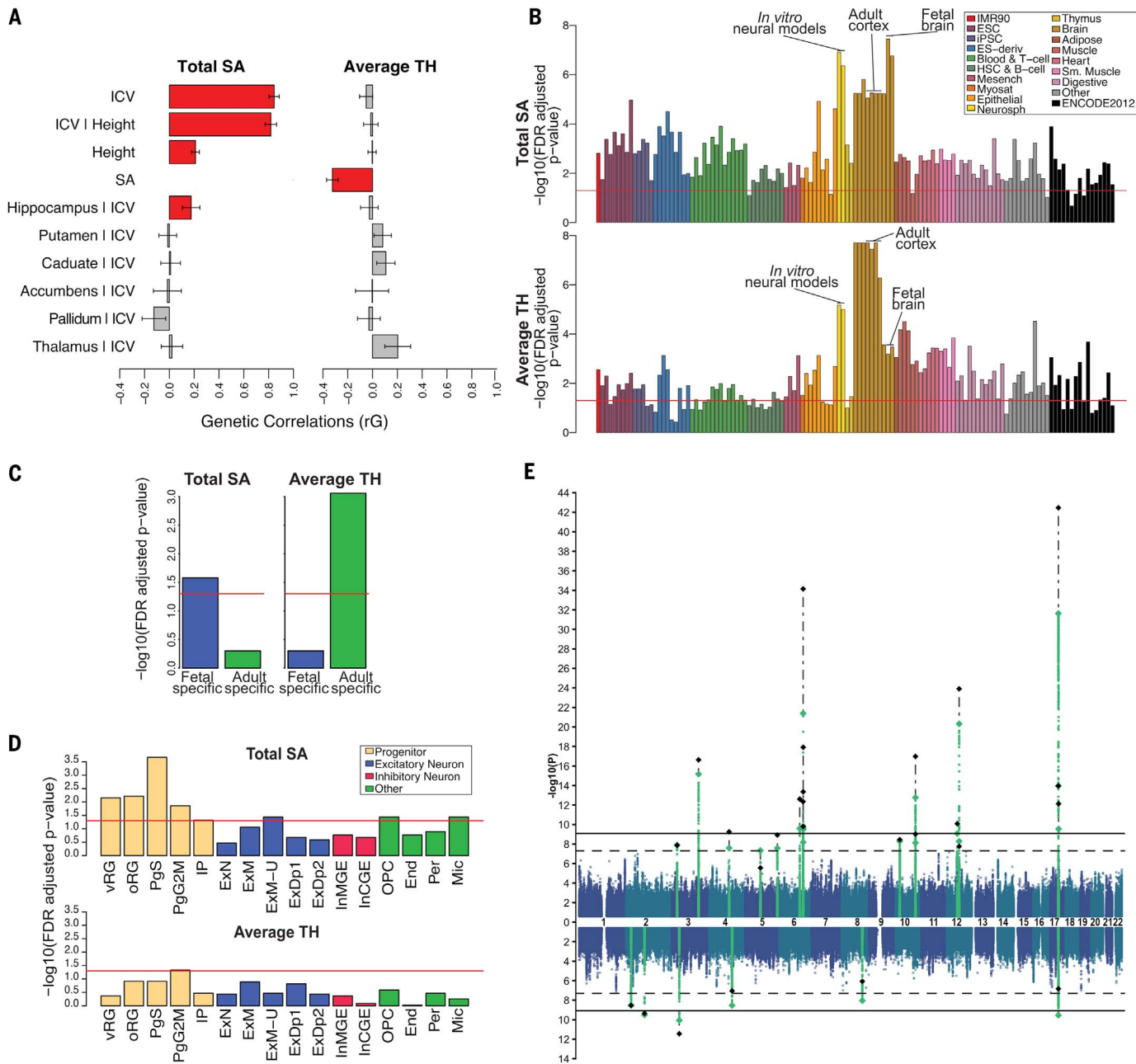
of gene regulatory annotations from adult and fetal brain tissues (21, 22). Total SA and average TH showed the strongest enrichment of heritability within genomic regions of active gene regulation (promoters and enhancers) in brain tissue and in vitro neural models derived from stem cell differentiation (Fig. 2B and fig. S6A). To examine temporally specific regulatory elements, we selected active regulatory elements that are specifically present in either the mid-fetal brain or the adult cortex. Total SA showed significant enrichment of heritability only within mid-fetal-specific active regulatory elements, whereas average TH showed significant enrichment only within adult-specific active regulatory elements (Fig. 2C and fig. S6B). Stronger enrichment was found in regions of the fetal cortex with more accessible chromatin in the neural progenitor-enriched germinal zone than in the neuron-enriched cortical plate (fig. S6C), similar to a previous analysis for ICV (27). We then performed an additional partitioned heritability enrichment analysis using regulatory elements associated with cell type-specific gene expression derived from a large single-cell RNA sequencing study of the human fetal brain (23). This analysis revealed significant enrichment of total SA heritability in all progenitor cell types, including those in active phases of mitosis as well as three different classes of progenitor cells, including outer radial glia cells, a cell type associated with expansion of cortical SA in human evolution (2) (Fig. 2D and fig. S6D). We also identified significant enrichments in upper layer excitatory neurons, oligodendrocyte progenitor cells, and microglia. These findings suggest that total SA is influenced by common genetic variants that may alter gene regulatory activity in neural progenitor cells during fetal development, supporting the radial unit hypothesis (3). By contrast, the strongest evidence of enrichment for average TH was found in active regulatory elements in the adult brain samples, which may reflect processes that occur after mid-fetal development, such as myelination, branching, or pruning (24).

We conducted pathway analyses to determine whether there was enrichment of association near genes in known biological pathways (25). We found 91 significant gene sets for total SA and 4 significant sets for average TH (table S9). Gene sets associated with total SA included chromatin binding, a process that guides neurodevelopmental fate decisions (26) (table S9 and fig. S7A). In addition, consistent with the partitioned heritability analyses implicating neural progenitor cells in total SA, gene ontology terms relevant to the cell cycle also showed significant enrichment in these analyses.

#### Loci influencing total SA and average TH

Seventeen of the 255 replicated loci were associated with total SA; 12 survived correction





**Fig. 2. Genetics of global measures.** (A) Genetic correlations between global measures and selected traits (red indicates significant correlation,  $\text{FDR} < 0.05$ ). Error bars indicate SE. (B) Partitioned heritability enrichment in active regulatory elements across tissues and cell types. ESC, embryonic stem cells; iPSC, induced pluripotent stem cells; ES-deriv, embryonic stem derived; HSC, hematopoietic stem cells; Mesench, mesenchymal; Myosat, myosatellite; Neurosph, neurosphere; Sm. Muscle, smooth muscle. (C) Partitioned

heritability enrichment in temporally specific active regulatory elements. (D) Partitioned heritability enrichment in regulatory elements of cell type-specific genes in the fetal brain. (E) Manhattan plot of loci associated with total SA (top) and average TH (bottom). Green diamonds indicate lead SNPs in the principal meta-analysis, black diamonds indicate changes in  $P$  value after replication, dashed horizontal lines denote genome-wide significance, and solid horizontal lines represent the multiple testing correction threshold.

for multiple testing (Fig. 2E and table S5). Eight loci influencing total SA have been previously associated with ICV (14). These include rs79600142 (principal meta-analysis  $P_{\text{MA}} = 2.3 \times 10^{-32}$ ; replication  $P_{\text{rep}} = 3.5 \times 10^{-43}$ ;  $P$  values reported from all meta-analytic results were for  $z$ -scores from fixed-effect meta-analyses) in the highly pleiotropic chromo-

some 17q21.31 inversion region, which has been associated with Parkinson's disease (27), educational attainment (28), and neuroticism (29). On 10q24.33, rs1628768 ( $z$ -score  $P_{\text{MA}} = 1.7 \times 10^{-13}$ ;  $P_{\text{rep}} = 1.0 \times 10^{-17}$ ) was shown by our bioinformatic annotations (30) to be an expression quantitative trait locus (eQTL) that influences expression levels of the *INA* gene

and the schizophrenia candidate genes (31) *AS3MT*, *NT5C2*, and *WBP1L* [linear regression coefficient  $t$  test false discovery rate (FDR)-corrected  $P$  value for the association of rs1628768 with expression data from surrounding genes  $\text{FDR}_{\text{CommonMindConsortium(CMC)}} < 1.0 \times 10^{-2}$ ] (tables S11 and S12). This region has been associated with schizophrenia; however,

rs1628768 is in low LD with the schizophrenia-associated SNP rs11191419 ( $r^2 = 0.15$ ) (32). The 6q21 locus influencing total SA is intronic to *FOXO3* (which also showed a significant gene-based association with total SA) (table S6). The major allele of the lead variant rs2802295 is associated with larger total SA ( $z$ -score  $P_{MA} = 2.5 \times 10^{-10}$ ;  $P_{rep} = 2.5 \times 10^{-13}$ ) and is in complete LD with rs2490272, a SNP previously associated with higher general cognitive function (33).

One locus not previously associated with ICV is rs11171739 ( $z$ -score  $P_{MA} = 8.4 \times 10^{-10}$ ;  $P_{rep} = 8.1 \times 10^{-11}$ ) on 12q13.2. This SNP is in high LD with SNPs associated with educational attainment (28) and is an eQTL for *RPS26* in the fetal (34) and adult cortex (30) [ $t$  test of Pearson's  $r$   $FDR_{FETAL} = 2.0 \times 10^{-24}$ , empirical  $t$  test of Pearson's  $r$   $FDR_{Genotype-Tissue\ Expression(GTEX)} = 3.3 \times 10^{-40}$ ] (tables S11 and S12). On 3p24.1, rs12630663 ( $z$ -score  $P_{MA} = 1.3 \times 10^{-8}$ ;  $P_{rep} = 1.4 \times 10^{-8}$ ) is of interest because of its proximity (~200 kb) to *EOMES* (also known as *TBR2*), which is expressed specifically in intermediate progenitor cells in the developing fetal cortex (35). rs12630663 is located in a chromosomal region with chromatin accessibility specific to the germinal zone in the human fetal cortex (21). Putatively causal SNPs in this region (table S13) show significant chromatin interactions with the *EOMES* promoter (36). The region also contains many

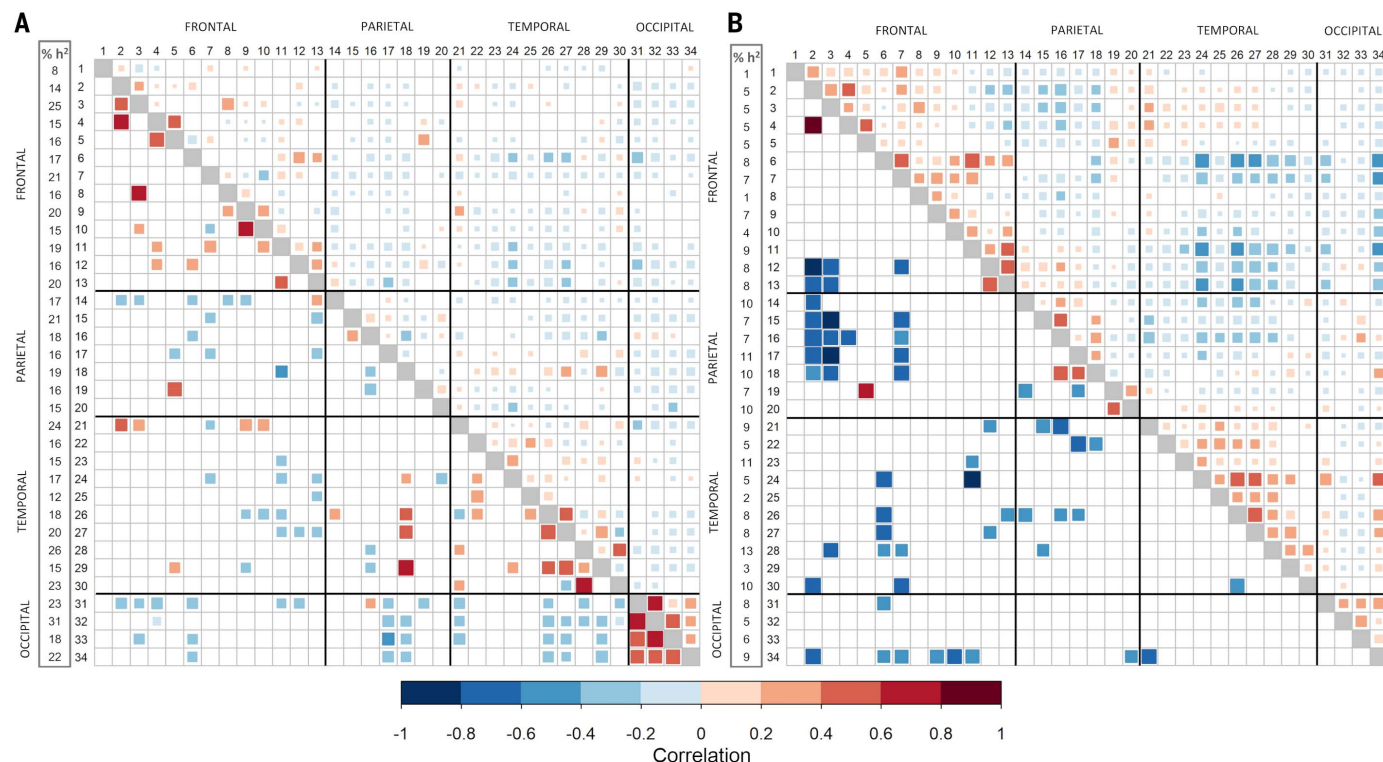
regulatory elements that, when excised via CRISPR-Cas9 in differentiating neural progenitor cells, significantly reduced *EOMES* expression (21). A rare homozygous chromosomal translocation in the region separating the regulatory elements from *EOMES* (fig. S8) silences *EOMES* expression and causes microcephaly (37), demonstrating that rare and common noncoding variation can have similar phenotypic consequences but to different degrees.

The two replicated loci associated with average TH, neither of which have been previously identified, survived correction for multiple testing (Fig. 2E and table S5). On 3p22.1, rs533577 ( $z$ -score  $P_{MA} = 8.4 \times 10^{-11}$ ;  $P_{rep} = 3.7 \times 10^{-12}$ ) is a fetal cortex eQTL ( $t$  test  $FDR_{FETAL} = 1.8 \times 10^{-4}$ ) for *RPSA*, encoding a 40S ribosomal protein with a potential role as a laminin receptor (38). Laminins are major constituents of the extracellular matrix and have critical roles in neurogenesis, neuronal differentiation, and migration (39). On 2q11.2, rs11692435 ( $z$ -score  $P_{MA} = 3.2 \times 10^{-10}$ ;  $P_{rep} = 4.5 \times 10^{-10}$ ) encodes a missense variant (p.A143V) predicted to affect *ACTR1B* protein function (40) and is an *ACTR1B* eQTL in the fetal cortex ( $t$  test  $FDR_{FETAL} = 3.9 \times 10^{-2}$ ) (tables S11 and S12). *ACTR1B* is a subunit of the dynactin complex involved in microtubule remodeling, which is important for neuronal migration (41).

### Genetics of regional SA and TH

The amount of phenotypic variance explained by common variants was higher for SA (8 to 31%) than TH (1 to 13%) for each of the specific cortical regions (Fig. 3, A and B, and table S7). To focus on region-specific influences, we controlled for global measures in the regional GWAS, which reduced the covariance between the regional measures (tables S14 and S15). Similar to the genetic correlation between global SA and TH, when significant, genetic correlations between regional SA and TH within the same region were moderate and negative (tables S14 and S15). This suggests that genetic variants that contribute to the expansion of SA in a specific region tend to also contribute to thinner TH in that region.

Genetic correlations between regions were calculated separately for SA and TH. Most genetic correlations between regions did not survive multiple testing correction. For SA, significant positive genetic correlations were generally found between physically adjacent regions and negative correlations between more distal regions (Fig. 3A). This pattern mirrored the phenotypic correlations between regions and was also observed for TH (Fig. 3, A and B). Consistent with this finding, hierarchical clustering of the genetic correlations resulted in a general grouping by physical proximity (fig. S9). These positive genetic



**Fig. 3. Genetic and phenotypic correlations between cortical regions.** (A) Surface area. (B) Thickness. Regions are numbered according to the inset key of Fig. 1A. The proportion of variance accounted for by common genetic variants is shown in the first column ( $h^2_{SNP}$ ). Phenotypic correlations from the UK Biobank are in the upper right triangle. Genetic correlations from the principal meta-analysis are in the lower left triangle. Only significant correlations are shown.

correlations were strongest between SA of regions surrounding the major, early-forming sulci (e.g., the pericalcarine, lingual, cuneus, and lateral occipital regions surrounding the calcarine sulcus), which may reflect genetic effects acting on the development of the sulci (17).

To further investigate biological pathways that influence areal (regional) identity, we used multivariate GWAS analyses (42) to aggregate association statistics separately for regional SA and TH. These analyses identify variants shared across regions and those within specific regions while accounting for the phenotypic correlations between regions. Pathway analyses of the multivariate SA results showed significant enrichment for 903 gene sets (table S10), many of which are involved in Wnt signaling, with the canonical Wnt signaling pathway showing the strongest enrichment ( $z$ -score,  $P = 8.8 \times 10^{-11}$ ). Wnt proteins regulate neural progenitor fate decisions (43, 44) and are expressed in spatially specific manners that influence areal identity (45). Pathway analyses of the multivariate TH results did not yield any findings that survived multiple testing correction.

### Loci influencing regional SA and TH

A total of 224 loci were nominally associated with regional SA and 12 with regional TH; of these, 175 SA and 10 TH loci survived multiple testing correction (table S5). As shown in Fig. 1B, most loci were associated with a single cortical region. Of the loci influencing regional measures, a few were also associated with global measures. Those that were associated showed effects in the same direction, indicating that the significant regional loci were not due to collider bias (46) (fig. S10).

The strongest regional association was observed on chromosome 15q14 with the precentral SA (rs1080066,  $z$ -score  $P_{MA} = 1.8 \times 10^{-137}$ ;  $P_{rep} = 4.6 \times 10^{-189}$ ; variance explained = 1.03%) (Fig. 4A). Across 11 traits, we observed 41 independent significant associations from 18 LD blocks ( $r^2$  threshold  $\leq 0.02$ ) (Fig. 4B and table S5). As we observed strong association with the SA of both pre- and post-central gyri (Fig. 4C), we localized the association within the central sulcus in 5993 unrelated individuals from the UK Biobank. The most significant association between rs1080066 and sulcal depth was observed around the pli de passage fronto-pariétal moyen (linear regression coefficient  $t$  test  $P = 7.9 \times 10^{-21}$ ), a region associated with hand fine-motor function in humans (47), which shows distinctive depth patterns across different species of primates (48) (Fig. 4D). rs1080066 is a fetal cortex eQTL for a downstream gene, *EIF2AK4* ( $t$  test  $FDR_{FETAL} = 4.8 \times 10^{-2}$ ), that encodes the GCN2 protein, which is a negative regulator of synaptic plasticity, memory, and neuritogenesis (49). The func-

tional data also highlight *THBS1* via chromatin interaction between the rs1080066 region and the promoter in neural progenitor cells and an eQTL effect in whole blood ( $z$ -score  $FDR_{BIOSgenelevel} = 6.1 \times 10^{-6}$ ). *THBS1* has roles in synaptogenesis and the maintenance of synaptic integrity (50).

Consistent with enrichment in the pathway analyses, many other loci were located in regions with functional links to genes involved in Wnt signaling (fig. S7B), including 1p13.2, where rs2999158 (lingual SA,  $z$ -score  $P_{MA} = 1.9 \times 10^{-11}$ ,  $P_{rep} = 3.0 \times 10^{-11}$ ; pericalcarine SA,  $z$ -score  $P_{MA} = 1.9 \times 10^{-11}$ ,  $P_{rep} = 9.9 \times 10^{-16}$ ) is an eQTL for *ST7L* and *WNT2B* ( $t$  test  $FDR_{CMC} < 1.0 \times 10^{-2}$ ) in the adult cortex (tables S11 and S12). On 14q23.1, we observed 20 significant loci (table S5) from four LD blocks. The strongest association here was for the precuneus SA (rs73313052:  $z$ -score  $P_{MA} = 1.1 \times 10^{-24}$ ;  $P_{rep} = 2.2 \times 10^{-35}$ ). These loci are located near *DACT1* and *DAAMI*, both of which are involved in synapse formation and are key members of the Wnt signaling cascade (51, 52). rs73313052 and high-LD proxies are eQTLs for *DAAMI* ( $t$  test  $FDR_{CMC} < 1.0 \times 10^{-2}$ ) in the adult cortex (tables S11 and S12).

Several of our regional associations occur near genes with known roles in brain development. For example, on chromosome 1p22.2, rs1413536 (associated with the inferior parietal SA:  $z$ -score  $P_{MA} = 1.6 \times 10^{-10}$ ;  $P_{rep} = 3.1 \times 10^{-14}$ ) is an eQTL in the adult cortex for *LMO4* ( $t$  test  $FDR_{CMC} < 1.0 \times 10^{-2}$ ), with chromatin interactions between the region housing both this SNP and rs59373415 (associated with the precuneus SA:  $z$ -score  $P_{MA} = 1.6 \times 10^{-10}$ ,  $P_{rep} = 5.3 \times 10^{-12}$ ) and the *LMO4* promoter in neural progenitor cells (tables S11 and S12). *Lmo4* is one of the few genes already known to be involved in areal identity specification in the mammalian brain (53).

### Genetic relationships with other traits

To examine shared genetic effects between cortical structure and other traits, we performed genetic correlation analyses with GWAS summary statistics from 23 selected traits. We observed significant positive genetic correlations between total SA and general cognitive function (54), educational attainment (28), and Parkinson's disease (27), indicating that allelic influences resulting in larger total SA are, in part, shared with those influencing greater cognitive capabilities as well as increased risk for Parkinson's disease. For total SA, significant negative genetic correlations were detected with insomnia (55), attention deficit hyperactivity disorder (ADHD) (56), depressive symptoms (57), major depressive disorder (58), and neuroticism (29) (Fig. 5A and table S16), again indicating that allelic influences resulting in smaller total SA are partly shared with those influencing an increased risk for these dis-

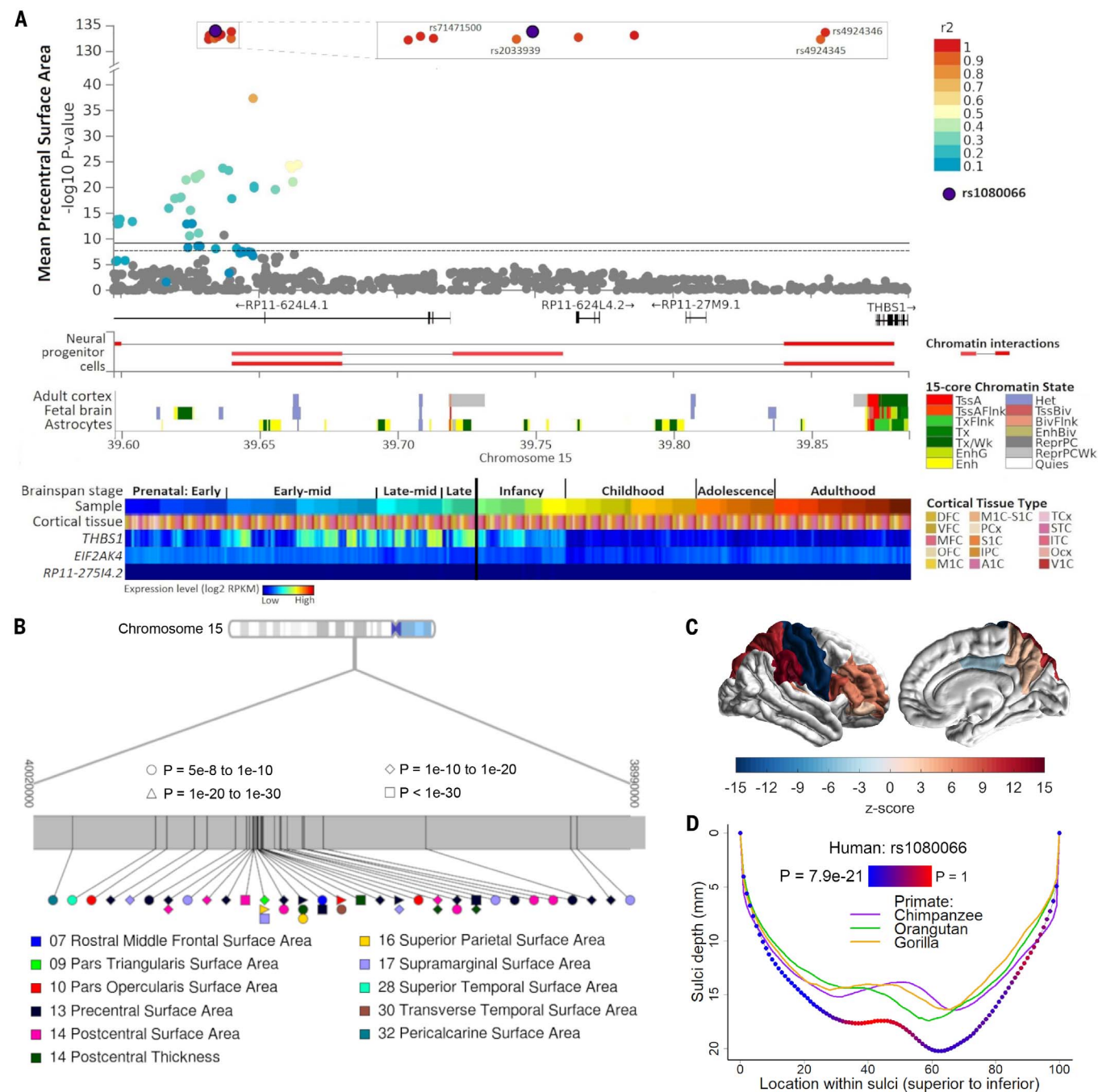
orders and traits. To map the magnitude of these effects across the brain, we calculated genetic correlations across cortical regions without correction for the global measures (Fig. 5B). Genetic correlations with average TH did not survive multiple testing correction, perhaps owing to the weaker genetic associations detected in the TH analyses. At the regional level, significant genetic correlations were observed between precentral TH and general cognitive function ( $r_G = 0.27$ ,  $z$ -score  $P_{rG} = 2.5 \times 10^{-5}$ ) and educational attainment ( $r_G = 0.25$ ,  $z$ -score  $P_{rG} = 4.0 \times 10^{-4}$ ), as well as between the inferior parietal TH and educational attainment ( $r_G = -0.19$ ,  $z$ -score  $P_{rG} = 5.0 \times 10^{-4}$ ). To confirm that these correlations were not driven by the presence of cases within the meta-analysis, genetic correlations were recalculated from a meta-analysis of GWAS from population-based cohorts and GWAS of controls from the case-control cohorts ( $N = 28,503$  individuals). All genetic correlations remained significant, with the exception of the genetic correlation between total SA and depressive symptoms (table S17).

We performed bidirectional Mendelian randomization (MR) (59) and LCV (19) analyses to investigate potential causal relationships underlying the observed genetic correlations with total SA. Both methods provided evidence of a causal effect of total SA on general cognitive function (inverse variance-weighted MR  $b_{MR-IVW} = 0.15$ , SE = 0.01,  $z$ -score  $P = 4.6 \times 10^{-8}$ ; LCV  $gcp = 0.40$ , 95% CIs: 0.23 to 0.57,  $t$  test  $P_{gcp=0} = 1.4 \times 10^{-9}$ ) and educational attainment ( $b_{MR-IVW} = 0.12$ , SE = 0.01,  $z$ -score  $P = 2.1 \times 10^{-21}$ ,  $gcp = 0.49$ , 95% CIs: 0.26 to 0.72,  $t$  test  $P_{gcp=0} = 8.0 \times 10^{-9}$ ) (tables S18 and S19). The MR analyses also indicated association in the reverse direction for both general cognitive function and educational attainment (table S18); however, this was not supported by the LCV analyses (table S19). We found limited to no support for a causal relationship in either direction between total SA and the six other traits that showed significant genetic correlations (tables S18 and S19). Taken together, these findings suggest that the previously reported phenotypic relationships between cortical SA and general cognitive function (60, 61) may partly reflect underlying causal processes.

### Discussion

Here we present a large-scale collaborative investigation of the effects of common genetic variation on human cortical structure using data from 51,665 individuals from 60 cohorts. Current knowledge of genes that affect cortical structure has been derived largely from creating mutations in model systems, such as the mouse, and observing effects on brain structure (8). Given the differences between mouse and human cortical structures (62), this study





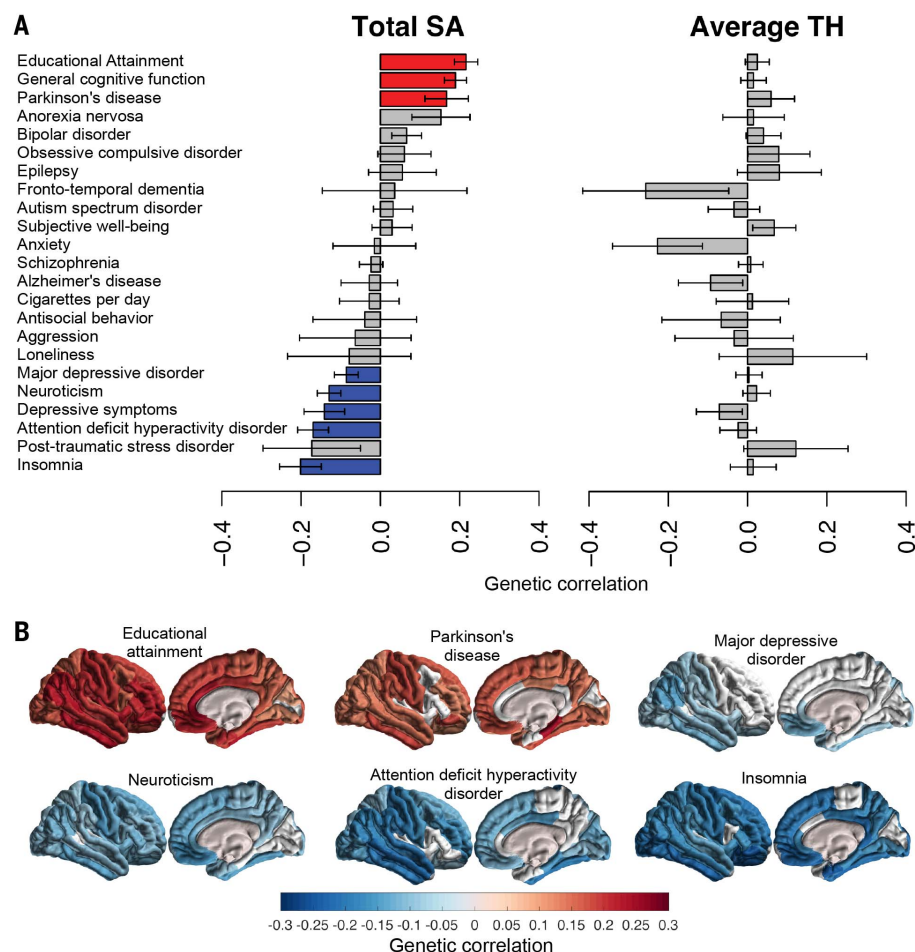
**Fig. 4. Genetics of regional measures.** (A) Regional plot for rs1080066, including additional lead SNPs within the LD block and surrounding genes, chromatin interactions in neural progenitor cells, chromatin state in RoadMap brain tissues, and BRAINSPAN candidate gene expression in brain tissue. (B) Ideogram of 15q14, detailing the significant independent loci and cortical regions. (C) rs1080066 (G allele) association with SA of regions. (D) rs1080066 association with central sulcus depth and depth of several primate species. RoadMap chromatin states: TssA, active transcription start site (TSS); TssAFlnk, flanking active TSS; TxFlnk, transcription at gene 5' and 3'; Tx, strong transcription; TxWk, weak transcription; EnhG, genic

enhancers; Enh, enhancers; Het, heterochromatin; TssBiv, bivalent/poised TSS; BivFlnk, flanking bivalent TSS/enhancer; EnhBiv, bivalent enhancer; ReprPC, repressed Polycomb; ReprPCWk, weak repressed Polycomb; Quies, quiescent/low. BRAINSPAN cortical tissue types: DFC, dorsolateral prefrontal cortex; VFC, ventrolateral prefrontal cortex; MFC, anterior cingulate cortex; OFC, orbital frontal cortex; M1C, primary motor cortex; M1C-S1C, primary motor-sensory cortex; PCx, parietal neocortex; S1C, primary somatosensory cortex; IPC, posteroventral parietal cortex; A1C, primary auditory cortex; TCx, temporal neocortex; STC, posterior superior temporal cortex; ITC, inferolateral temporal cortex; Ocx, occipital neocortex; V1C, primary visual cortex.

provides genome-wide insight into human variation and genes that influence a characteristically human phenotype. Previous studies have identified rare variants that

have substantial effects on cortical structure in humans (8), and this study adds to the catalog of the type of variation that affects human cortical structure.

We show that the genetic architecture of the cortex is highly polygenic and that variants often have a specific effect on individual cortical regions. This finding suggests that there



**Fig. 5. Genetic correlations with neuropsychiatric and psychological traits.** (A) Genetic correlations with total SA and average TH. Significant positive correlations are shown in red; significant negative correlations are shown in blue. Error bars indicate SE. (B) Regional variation in the strength of genetic correlations between regional SA (without correction for total SA) and traits showing significant genetic correlations with total SA.

are distinct genes involved in the development of specific cortical areas and raises the possibility of developmental and regional specificity in eQTL effects. We also find that rare variants and common variants in similar locations in the genome can lead to similar effects on brain structure, albeit to different degrees. For example, a balanced chromosomal translocation near *EOMES* leads to microcephaly in a region abutting a common variant signal associated with small changes in cortical SA (fig. S8).

We provide evidence that genetic variation affecting gene regulation in progenitor cell types, present in fetal development, affects adult cortical SA. This is consistent with the radial unit hypothesis, which states that an increase in proliferative divisions of neural progenitor cells leads to an expansion of the pool of progenitors, resulting in increases in neuronal production and cortical SA (3, 62). Notably, we see an enrichment of heritability in cortical SA within regulatory elements that influence outer radial glia cells, a cell type that

is considerably more prevalent in gyrencephalic species such as humans and has been hypothesized to account for the increased progenitor pool size in humans (2).

We also find that Wnt signaling genes influence areal expansion in humans, as previously reported in model organisms such as mice (45). Cortical TH was associated with loci near genes implicated in cell differentiation, migration, adhesion, and myelination. Consequently, molecular studies in the appropriate tissues, such as neural progenitor cells and their differentiated neurons, will be critical for mapping the involvement of specific genes.

We demonstrate that genetic variation associated with brain structure also affects general cognitive function, Parkinson's disease, depression, neuroticism, ADHD, and insomnia. This implies that the genetic variants that influence brain structure also shape brain function. Although most of the differences in cortical structure observed in these disorders have been reported for TH, our results show significant

genetic correlations for SA, perhaps suggesting that the phenotypic differences observed in cortical TH (table S1) partially reflect environmental influences or effects of illness or treatment. We find evidence that brain structure is a key phenotype along the causal pathway that leads from genetic variation to differences in general cognitive function and educational attainment.

In summary, this work identifies genome-wide significant loci associated with cortical SA and TH and enables a deeper understanding of the genetic architecture of the human cerebral cortex and its patterning.

## Materials and methods summary

### Participants

Participants were genotyped individuals, with cortical MRI data, from 60 cohorts. Participants in all cohorts gave written informed consent, and each site obtained approval from local research ethics committees or institutional review boards. Ethics approval for the meta-analysis was granted by the QIMR Berghofer Medical Research Institute Human Research Ethics Committee (approval: P2204).

### Imaging

Measures of cortical SA and TH were derived from in vivo whole-brain T1-weighted MRI scans using FreeSurfer MRI-processing software (7). SA and TH were quantified for each individual across the whole cortex and within 34 distinct gyral-defined regions, according to the Desikan-Killiany atlas. The regions were averaged across both hemispheres (10).

### Genetic association analyses

Within each cohort, GWASs were conducted on each of the 70 imaging phenotypes. After quality control, these data were meta-analyzed using METAL (63). Initially the GWASs from European cohorts were meta-analyzed together, yielding the principal results that were used in all subsequent analyses. We sought replication of the genome-wide significant loci with data from the CHARGE Consortium. To examine generalization of effects, the GWASs from the non-European cohorts were meta-analyzed together, and we then collectively meta-analyzed the European and non-European results. Polygenic risk scores were derived from the principal meta-analysis and used to predict the amount of variance explained by the association of common genetic variants with the cortical SA and TH in an independent sample.

### SNP heritability and tests for genetic correlations and causation

Heritability explained by common genetic variants (SNP heritability) was estimated using LD score regression (64). Genetic correlations between cortical regions were estimated using cross-trait LD score regression



(65). To examine genetic relationships with other traits, we estimated genetic correlations using cross-trait LD score regression. To determine whether these correlations were causal, we used MR (59) and LCV analyses (19).

### Partitioned heritability

Partitioned heritability analysis was used to estimate the percentage of heritability explained by annotated regions of the genome (66). Heritability enrichment was first estimated in active regulatory elements across tissues and cell types (21, 22). Subsequently, heritability enrichment was estimated in mid-fetal-specific active regulatory elements and adult cortex-specific active regulatory elements. Finally, heritability enrichment was estimated in regulatory elements of cell type-specific genes in the fetal brain (23).

### Functional follow-up

After obtaining the principal meta-analytic results, we followed up with gene-based association analysis using MAGMA (67). A multivariate analysis of the regional association results was conducted using TATES (42). Pathway analyses were conducted on the global measures and the results from the multivariate analyses using DEPICT to identify enrichment of association in known genetic functional pathways (25). To identify putatively causal variants, we performed fine-mapping with CAVIAR (68). Potential functional impact was investigated using FUMA (30), which annotates the SNP location, nearby enhancers or promoters, chromatin state, associated eQTLs, and the potential for functional effects through predicted effects.

### REFERENCES AND NOTES

- B. Fischl, FreeSurfer. *Neuroimage* **62**, 774–781 (2012). doi: [10.1016/j.neuroimage.2012.01.021](https://doi.org/10.1016/j.neuroimage.2012.01.021); pmid: [22248573](https://pubmed.ncbi.nlm.nih.gov/22248573/)
- J. H. Lui, D. V. Hansen, A. R. Kriegstein, Development and evolution of the human neocortex. *Cell* **146**, 18–36 (2011). doi: [10.1016/j.cell.2011.06.030](https://doi.org/10.1016/j.cell.2011.06.030); pmid: [21729779](https://pubmed.ncbi.nlm.nih.gov/21729779/)
- P. Rakic, Specification of cerebral cortical areas. *Science* **241**, 170–176 (1988). doi: [10.1126/science.3291116](https://doi.org/10.1126/science.3291116); pmid: [3291116](https://pubmed.ncbi.nlm.nih.gov/3291116/)
- P. M. Thompson et al., ENIGMA and global neuroscience: A decade of large-scale studies of the brain in health and disease across more than 40 countries. *PsyArXiv* (4 July 2019). doi: [10.31234/osf.io/qnsh7](https://doi.org/10.31234/osf.io/qnsh7)
- M. S. Panizzon et al., Distinct genetic influences on cortical surface area and cortical thickness. *Cereb. Cortex* **19**, 2728–2735 (2009). doi: [10.1093/cercor/bhp026](https://doi.org/10.1093/cercor/bhp026); pmid: [19299253](https://pubmed.ncbi.nlm.nih.gov/19299253/)
- A. M. Winkler et al., Cortical thickness or grey matter volume? The importance of selecting the phenotype for imaging genetics studies. *Neuroimage* **53**, 1135–1146 (2010). doi: [10.1016/j.neuroimage.2009.12.028](https://doi.org/10.1016/j.neuroimage.2009.12.028); pmid: [20006715](https://pubmed.ncbi.nlm.nih.gov/20006715/)
- L. T. Strike et al., Genetic complexity of cortical structure: Differences in genetic and environmental factors influencing cortical surface area and thickness. *Cereb. Cortex* **29**, 952–962 (2019). pmid: [29377989](https://pubmed.ncbi.nlm.nih.gov/29377989/)
- B. I. Bae, D. Jayaraman, C. A. Walsh, Genetic changes shaping the human brain. *Dev. Cell* **32**, 423–434 (2015). doi: [10.1016/j.devcel.2015.01.035](https://doi.org/10.1016/j.devcel.2015.01.035); pmid: [25710529](https://pubmed.ncbi.nlm.nih.gov/25710529/)
- D. W. Meechan, T. M. Maynard, E. S. Tucker, A. S. LaMantia, Three phases of DiGeorge/22q11 deletion syndrome pathogenesis during brain development: Patterning, proliferation, and mitochondrial functions of 22q11 genes. *Int. J. Dev. Neurosci.* **29**, 283–294 (2011). doi: [10.1016/j.ijdevneu.2010.08.005](https://doi.org/10.1016/j.ijdevneu.2010.08.005); pmid: [20833244](https://pubmed.ncbi.nlm.nih.gov/20833244/)
- R. S. Desikan et al., An automated labeling system for subdividing the human cerebral cortex on MRI scans into gyral based regions of interest. *Neuroimage* **31**, 968–980 (2006). doi: [10.1016/j.neuroimage.2006.01.021](https://doi.org/10.1016/j.neuroimage.2006.01.021); pmid: [16530430](https://pubmed.ncbi.nlm.nih.gov/16530430/)
- See supplementary materials.
- D. R. Nyholt, A simple correction for multiple testing for single-nucleotide polymorphisms in linkage disequilibrium with each other. *Am. J. Hum. Genet.* **74**, 765–769 (2004). doi: [10.1086/383251](https://doi.org/10.1086/383251); pmid: [14997420](https://pubmed.ncbi.nlm.nih.gov/14997420/)
- D. R. Nyholt, Genetic determinants of cortical structure (thickness, surface area and volumes) among disease free adults in the CHARGE consortium. *bioRxiv* 409649 [Preprint]. 19 June 2019. doi: [10.1101/409649](https://doi.org/10.1101/409649)
- H. H. Adams et al., Novel genetic loci underlying human intracranial volume identified through genome-wide association. *Nat. Neurosci.* **19**, 1569–1582 (2016). doi: [10.1038/nn.4398](https://doi.org/10.1038/nn.4398); pmid: [27694991](https://pubmed.ncbi.nlm.nih.gov/27694991/)
- L. T. Elliott et al., Genome-wide association studies of brain imaging phenotypes in UK Biobank. *Nature* **562**, 210–216 (2018). doi: [10.1038/s41586-018-0571-7](https://doi.org/10.1038/s41586-018-0571-7); pmid: [30305740](https://pubmed.ncbi.nlm.nih.gov/30305740/)
- M. A. Ikram et al., Common variants at 6q22 and 17q21 are associated with intracranial volume. *Nat. Genet.* **44**, 539–544 (2012). doi: [10.1038/ng0612-732c](https://doi.org/10.1038/ng0612-732c); pmid: [22504418](https://pubmed.ncbi.nlm.nih.gov/22504418/)
- D. P. Hibar et al., Common genetic variants influence human subcortical brain structures. *Nature* **520**, 224–229 (2015). doi: [10.1038/nature14101](https://doi.org/10.1038/nature14101); pmid: [25607358](https://pubmed.ncbi.nlm.nih.gov/25607358/)
- J. L. Stein et al., Identification of common variants associated with human hippocampal and intracranial volumes. *Nat. Genet.* **44**, 552–561 (2012). doi: [10.1038/ng.2250](https://doi.org/10.1038/ng.2250); pmid: [22504417](https://pubmed.ncbi.nlm.nih.gov/22504417/)
- L. J. O'Connor, A. L. Price, Distinguishing genetic correlation from causation across 52 diseases and complex traits. *Nat. Genet.* **50**, 1728–1734 (2018). doi: [10.1038/s41588-018-0255-0](https://doi.org/10.1038/s41588-018-0255-0)
- H. K. Finucane et al., Heritability enrichment of specifically expressed genes identifies disease-relevant tissues and cell types. *Nat. Genet.* **50**, 621–629 (2018). doi: [10.1038/s41588-018-0081-4](https://doi.org/10.1038/s41588-018-0081-4); pmid: [29632380](https://pubmed.ncbi.nlm.nih.gov/29632380/)
- L. de la Torre-Ubieta et al., The dynamic landscape of open chromatin during human cortical neurogenesis. *Cell* **172**, 289–304.e18 (2018). doi: [10.1016/j.cell.2017.12.014](https://doi.org/10.1016/j.cell.2017.12.014); pmid: [29307494](https://pubmed.ncbi.nlm.nih.gov/29307494/)
- A. Kundaje et al., Integrative analysis of 111 reference human epigenomes. *Nature* **518**, 317–330 (2015). doi: [10.1038/nature14248](https://doi.org/10.1038/nature14248); pmid: [25693563](https://pubmed.ncbi.nlm.nih.gov/25693563/)
- D. Polioudakis et al., A Single-Cell Transcriptomic Atlas of Human Neocortical Development during Mid-gestation. *Neuron* **103**, 785–801.e8 (2019). doi: [10.1016/j.neuron.2019.06.011](https://doi.org/10.1016/j.neuron.2019.06.011); pmid: [31303374](https://pubmed.ncbi.nlm.nih.gov/31303374/)
- J. C. Silbereis, S. Pochareddy, Y. Zhu, M. Li, N. Sestan, The cellular and molecular landscapes of the developing human central nervous system. *Neuron* **89**, 248–268 (2016). doi: [10.1016/j.neuron.2015.12.008](https://doi.org/10.1016/j.neuron.2015.12.008); pmid: [26796689](https://pubmed.ncbi.nlm.nih.gov/26796689/)
- T. H. Pers et al., Biological interpretation of genome-wide association studies using predicted gene functions. *Nat. Commun.* **6**, 5890 (2015). doi: [10.1038/ncomms6890](https://doi.org/10.1038/ncomms6890); pmid: [25597830](https://pubmed.ncbi.nlm.nih.gov/25597830/)
- J. L. Ronan, W. Wu, G. R. Crabtree, From neural development to cognition: Unexpected roles for chromatin. *Nat. Rev. Genet.* **14**, 347–359 (2013). doi: [10.1038/nrg3413](https://doi.org/10.1038/nrg3413); pmid: [23568486](https://pubmed.ncbi.nlm.nih.gov/23568486/)
- M. A. Nalls et al., Expanding Parkinson's disease genetics: Novel risk loci, causal insights and heritable risk. *bioRxiv* 388165 [Preprint]. 4 March 2019. doi: [10.1101/388165](https://doi.org/10.1101/388165)
- J. J. Lee et al., Gene discovery and polygenic prediction from a genome-wide association study of educational attainment in 1.1 million individuals. *Nat. Genet.* **50**, 1112–1121 (2018). doi: [10.1038/s41588-018-0147-3](https://doi.org/10.1038/s41588-018-0147-3); pmid: [30038396](https://pubmed.ncbi.nlm.nih.gov/30038396/)
- M. Nagel et al., Meta-analysis of genome-wide association studies for neuroticism in 449,484 individuals identifies novel genetic loci and pathways. *Nat. Genet.* **50**, 920–927 (2018). doi: [10.1038/s41588-018-0151-7](https://doi.org/10.1038/s41588-018-0151-7); pmid: [29942085](https://pubmed.ncbi.nlm.nih.gov/29942085/)
- K. Watanabe, E. Taskesen, A. van Bochoven, D. Posthuma, Functional mapping and annotation of genetic associations with FUMA. *Nat. Commun.* **8**, 1826 (2017). doi: [10.1038/s41467-017-01261-5](https://doi.org/10.1038/s41467-017-01261-5); pmid: [29184056](https://pubmed.ncbi.nlm.nih.gov/29184056/)
- R. R. R. Duarte et al., Genome-wide significant schizophrenia risk variation on chromosome 10q24 is associated with altered cis-regulation of BORCS7, AS3MT, and NT5C2 in the human brain. *Am. J. Med. Genet. B* **171**, 806–814 (2016). doi: [10.1002/ajmg.b.32445](https://doi.org/10.1002/ajmg.b.32445); pmid: [27004590](https://pubmed.ncbi.nlm.nih.gov/27004590/)
- Schizophrenia Working Group of the Psychiatric Genomics Consortium, Biological insights from 108 schizophrenia-associated genetic loci. *Nature* **511**, 421–427 (2014). doi: [10.1038/nature13595](https://doi.org/10.1038/nature13595); pmid: [25056061](https://pubmed.ncbi.nlm.nih.gov/25056061/)
- S. Sniekers et al., Genome-wide association meta-analysis of 78,308 individuals identifies new loci and genes influencing human intelligence. *Nat. Genet.* **49**, 1107–1112 (2017). doi: [10.1038/ng.3869](https://doi.org/10.1038/ng.3869); pmid: [28530673](https://pubmed.ncbi.nlm.nih.gov/28530673/)
- H. E. O'Brien et al., Expression quantitative trait loci in the developing human brain and their enrichment in neuropsychiatric disorders. *Genome Biol.* **19**, 194 (2018). doi: [10.1186/s13059-018-1567-1](https://doi.org/10.1186/s13059-018-1567-1); pmid: [30419947](https://pubmed.ncbi.nlm.nih.gov/30419947/)
- C. Englund et al., Pax6, Tbr2, and Tbr1 are expressed sequentially by radial glia, intermediate progenitor cells, and postmitotic neurons in developing neocortex. *J. Neurosci.* **25**, 247–251 (2005). doi: [10.1523/JNEUROSCI.2899-04.2005](https://doi.org/10.1523/JNEUROSCI.2899-04.2005); pmid: [15634788](https://pubmed.ncbi.nlm.nih.gov/15634788/)
- H. Won et al., Chromosome conformation elucidates regulatory relationships in developing human brain. *Nature* **538**, 523–527 (2016). doi: [10.1038/nature19847](https://doi.org/10.1038/nature19847); pmid: [27760116](https://pubmed.ncbi.nlm.nih.gov/27760116/)
- L. Baala et al., Homozygous silencing of T-box transcription factor EOMES leads to microcephaly with polymicrogyria and corpus callosum agenesis. *Nat. Genet.* **39**, 454–456 (2007). doi: [10.1038/ng1993](https://doi.org/10.1038/ng1993); pmid: [17353897](https://pubmed.ncbi.nlm.nih.gov/17353897/)
- V. DiGiacomo, D. Meruelo, Looking into laminin receptor: Critical discussion regarding the non-integrin 37/67-kDa laminin receptor/RPSA protein. *Biol. Rev. Camb. Philos. Soc.* **91**, 288–310 (2016). doi: [10.1111/brv.12170](https://doi.org/10.1111/brv.12170); pmid: [25630983](https://pubmed.ncbi.nlm.nih.gov/25630983/)
- V. Solozobova, N. Wyvekens, J. Pruszek, Lessons from the embryonic neural stem cell niche for neural lineage differentiation of pluripotent stem cells. *Stem Cell Rev. Rep.* **8**, 813–829 (2012). doi: [10.1007/s12015-012-9381-8](https://doi.org/10.1007/s12015-012-9381-8); pmid: [22628111](https://pubmed.ncbi.nlm.nih.gov/22628111/)
- C. Chelala, A. Khan, N. R. Lemoine, SNP Nexus: A web database for functional annotation of newly discovered and public domain single nucleotide polymorphisms. *Bioinformatics* **25**, 655–661 (2009). doi: [10.1093/bioinformatics/btn653](https://doi.org/10.1093/bioinformatics/btn653); pmid: [19098027](https://pubmed.ncbi.nlm.nih.gov/19098027/)
- Y. Itoh, A balancing Akt: How to fine-tune neuronal migration speed. *Neurogenesis* **3**, e1256854 (2016). doi: [10.1080/23262133.2016.1256854](https://doi.org/10.1080/23262133.2016.1256854); pmid: [28405587](https://pubmed.ncbi.nlm.nih.gov/28405587/)
- S. van der Sluis, D. Posthuma, C. V. Dolan, TATES: Efficient multivariate genotype-phenotype analysis for genome-wide association studies. *PLoS Genet.* **9**, e1003235 (2013). doi: [10.1371/journal.pgen.1003235](https://doi.org/10.1371/journal.pgen.1003235); pmid: [23359524](https://pubmed.ncbi.nlm.nih.gov/23359524/)
- A. Chenn, C. A. Walsh, Regulation of cerebral cortical size by control of cell cycle exit in neural precursors. *Science* **297**, 365–369 (2002). doi: [10.1126/science.1074192](https://doi.org/10.1126/science.1074192); pmid: [12130776](https://pubmed.ncbi.nlm.nih.gov/12130776/)
- R. N. Munji, Y. Choe, G. Li, J. A. Siegenthaler, S. J. Pleasure, Wnt signaling regulates neuronal differentiation of cortical intermediate progenitors. *J. Neurosci.* **31**, 1676–1687 (2011). doi: [10.1523/JNEUROSCI.5404-10.2011](https://doi.org/10.1523/JNEUROSCI.5404-10.2011); pmid: [21289176](https://pubmed.ncbi.nlm.nih.gov/21289176/)
- S. J. Harrison-Uy, S. J. Pleasure, Wnt signaling and forebrain development. *Cold Spring Harb. Perspect. Biol.* **4**, a008094 (2012). doi: [10.1101/cshperspect.a008094](https://doi.org/10.1101/cshperspect.a008094); pmid: [22621768](https://pubmed.ncbi.nlm.nih.gov/22621768/)
- H. Aschard, B. J. Vilhjálmsdóttir, A. D. Joshi, A. L. Price, P. Kraft, Adjusting for heritable covariates can bias effect estimates in genome-wide association studies. *Am. J. Hum. Genet.* **96**, 329–339 (2015). doi: [10.1016/j.ajhg.2014.12.021](https://doi.org/10.1016/j.ajhg.2014.12.021); pmid: [25640676](https://pubmed.ncbi.nlm.nih.gov/25640676/)
- M. D. Cykowski et al., The central sulcus: An observer-independent characterization of sulcal landmarks and depth asymmetry. *Cereb. Cortex* **18**, 1999–2009 (2008). doi: [10.1093/cercor/bhm224](https://doi.org/10.1093/cercor/bhm224); pmid: [18071195](https://pubmed.ncbi.nlm.nih.gov/18071195/)
- W. D. Hopkins et al., Evolution of the central sulcus morphology in primates. *Brain Behav. Evol.* **84**, 19–30 (2014). doi: [10.1159/000362431](https://doi.org/10.1159/000362431); pmid: [25139259](https://pubmed.ncbi.nlm.nih.gov/25139259/)
- M. Roffé, G. N. Hajj, H. F. Azevedo, V. S. Alves, B. A. Castilho, IMPACT is a developmentally regulated protein in neurons that opposes the eukaryotic initiation factor 2α kinase GCN2 in the modulation of neurite outgrowth. *J. Biol. Chem.* **288**, 10860–10869 (2013). doi: [10.1074/jbc.M113.461970](https://doi.org/10.1074/jbc.M113.461970); pmid: [23447528](https://pubmed.ncbi.nlm.nih.gov/23447528/)
- A. R. Jayakumar et al., Decreased astrocytic thrombospondin-1 secretion after chronic ammonia treatment reduces the level of synaptic proteins: In vitro and in vivo studies. *J. Neurochem.* **131**, 333–347 (2014). doi: [10.1111/jnc.12810](https://doi.org/10.1111/jnc.12810); pmid: [25040426](https://pubmed.ncbi.nlm.nih.gov/25040426/)
- R. Habas, Y. Kato, X. He, Wnt/PCP activation of Rho regulates vertebrate gastrulation and requires a novel Formin homology protein Daam1. *Cell* **107**, 843–854 (2001). doi: [10.1016/S0092-8674\(01\)00614-6](https://doi.org/10.1016/S0092-8674(01)00614-6); pmid: [11779461](https://pubmed.ncbi.nlm.nih.gov/11779461/)
- N. D. Okerlund et al., Dact1 is a postsynaptic protein required for dendrite, spine, and excitatory synapse development in the

- mouse forebrain. *J. Neurosci.* **30**, 4362–4368 (2010). doi: [10.1523/JNEUROSCI.0354.10.2010](https://doi.org/10.1523/JNEUROSCI.0354.10.2010); pmid: [20335472](https://pubmed.ncbi.nlm.nih.gov/20335472/)
53. Z. Huang *et al.*, Transcription factor Lmo4 defines the shape of functional areas in developing cortices and regulates sensorimotor control. *Dev. Biol.* **327**, 132–142 (2009). doi: [10.1016/j.ydbio.2008.12.003](https://doi.org/10.1016/j.ydbio.2008.12.003); pmid: [19111533](https://pubmed.ncbi.nlm.nih.gov/19111533/)
  54. J. E. Savage *et al.*, Genome-wide association meta-analysis in 269,867 individuals identifies new genetic and functional links to intelligence. *Nat. Genet.* **50**, 912–919 (2018). doi: [10.1038/s41588-018-0152-6](https://doi.org/10.1038/s41588-018-0152-6); pmid: [29942086](https://pubmed.ncbi.nlm.nih.gov/29942086/)
  55. P. R. Jansen *et al.*, Genome-wide analysis of insomnia in 1,331,010 individuals identifies new risk loci and functional pathways. *Nat. Genet.* **51**, 394–403 (2019). doi: [10.1038/s41588-018-0333-3](https://doi.org/10.1038/s41588-018-0333-3); pmid: [30804565](https://pubmed.ncbi.nlm.nih.gov/30804565/)
  56. D. Demontis *et al.*, Discovery of the first genome-wide significant risk loci for attention deficit/hyperactivity disorder. *Nat. Genet.* **51**, 63–75 (2019). doi: [10.1038/s41588-018-0269-7](https://doi.org/10.1038/s41588-018-0269-7); pmid: [30478444](https://pubmed.ncbi.nlm.nih.gov/30478444/)
  57. A. Okbay *et al.*, Genetic variants associated with subjective well-being, depressive symptoms, and neuroticism identified through genome-wide analyses. *Nat. Genet.* **48**, 624–633 (2016). doi: [10.1038/ng.3552](https://doi.org/10.1038/ng.3552); pmid: [27089181](https://pubmed.ncbi.nlm.nih.gov/27089181/)
  58. D. M. Howard *et al.*, Genome-wide meta-analysis of depression identifies 102 independent variants and highlights the importance of the prefrontal brain regions. *Nat. Neurosci.* **22**, 343–352 (2019). doi: [10.1038/s41593-018-0326-7](https://doi.org/10.1038/s41593-018-0326-7); pmid: [30718901](https://pubmed.ncbi.nlm.nih.gov/30718901/)
  59. G. Hernani *et al.*, The MR-Base platform supports systematic causal inference across the human genome. *eLife* **7**, e34408 (2018). doi: [10.7554/eLife.34408](https://doi.org/10.7554/eLife.34408); pmid: [29846171](https://pubmed.ncbi.nlm.nih.gov/29846171/)
  60. M. A. McDaniel, Big-brained people are smarter: A meta-analysis of the relationship between in vivo brain volume and intelligence. *Intelligence* **33**, 337–346 (2005). doi: [10.1016/j.intell.2004.11.005](https://doi.org/10.1016/j.intell.2004.11.005)
  61. E. Vuoksimaa *et al.*, The Genetic Association Between Neocortical Volume and General Cognitive Ability Is Driven by Global Surface Area Rather Than Thickness. *Cereb. Cortex* **25**, 2127–2137 (2015). doi: [10.1093/cercor/bhu018](https://doi.org/10.1093/cercor/bhu018); pmid: [24554725](https://pubmed.ncbi.nlm.nih.gov/24554725/)
  62. P. Rakic, Evolution of the neocortex: A perspective from developmental biology. *Nat. Rev. Neurosci.* **10**, 724–735 (2009). doi: [10.1038/nrn2719](https://doi.org/10.1038/nrn2719); pmid: [19763105](https://pubmed.ncbi.nlm.nih.gov/19763105/)
  63. C. J. Willer, Y. Li, G. R. Abecasis, METAL: Fast and efficient meta-analysis of genomewide association scans. *Bioinformatics* **26**, 2190–2191 (2010). doi: [10.1093/bioinformatics/btq340](https://doi.org/10.1093/bioinformatics/btq340); pmid: [20616382](https://pubmed.ncbi.nlm.nih.gov/20616382/)
  64. B. K. Bulik-Sullivan *et al.*, LD Score regression distinguishes confounding from polygenicity in genome-wide association studies. *Nat. Genet.* **47**, 291–295 (2015). doi: [10.1038/ng.3211](https://doi.org/10.1038/ng.3211); pmid: [25642630](https://pubmed.ncbi.nlm.nih.gov/25642630/)
  65. B. Bulik-Sullivan *et al.*, An atlas of genetic correlations across human diseases and traits. *Nat. Genet.* **47**, 1236–1241 (2015). doi: [10.1038/ng.3406](https://doi.org/10.1038/ng.3406); pmid: [26414676](https://pubmed.ncbi.nlm.nih.gov/26414676/)
  66. H. K. Finucane *et al.*, Partitioning heritability by functional annotation using genome-wide association summary statistics. *Nat. Genet.* **47**, 1228–1235 (2015). doi: [10.1038/ng.3404](https://doi.org/10.1038/ng.3404); pmid: [26414678](https://pubmed.ncbi.nlm.nih.gov/26414678/)
  67. C. A. de Leeuw, J. M. Mooij, T. Heskes, D. Posthuma, MAGMA: Generalized gene-set analysis of GWAS data. *PLOS Comput. Biol.* **11**, e1004219 (2015). doi: [10.1371/journal.pcbi.1004219](https://doi.org/10.1371/journal.pcbi.1004219); pmid: [25885710](https://pubmed.ncbi.nlm.nih.gov/25885710/)
  68. F. Hormozdiari, E. Kostem, E. Y. Kang, B. Pananiuc, E. Eskin, Identifying causal variants at loci with multiple signals of association. *Genetics* **198**, 497–508 (2014). doi: [10.1534/genetics.114.167908](https://doi.org/10.1534/genetics.114.167908); pmid: [25104515](https://pubmed.ncbi.nlm.nih.gov/25104515/)
  69. R. Ferrari *et al.*, Frontotemporal dementia and its subtypes: A genome-wide association study. *Lancet Neurol.* **13**, 686–699 (2014). doi: [10.1016/S1474-4422\(14\)70065-1](https://doi.org/10.1016/S1474-4422(14)70065-1); pmid: [24943344](https://pubmed.ncbi.nlm.nih.gov/24943344/)
- Sweden in 2011–2012 and acknowledges that the image analyses were performed on resources provided by the Swedish National Infrastructure for Computing at HPC2N in Umeå. The BONN cohort thanks (in alphabetical order) M. Bartling, U. Broicher, L. Ehrmantraut, A. Maaser, B. Mahlow, S. Mentges, K. Raczka, L. Schinabeck, and P. Trautner for their support and help. The CARDIFF cohort thank researchers at Cardiff University who contributed to the MBBrains panel. The DNS cohort thanks the staff of the Laboratory of NeuroGenetics. The FBIRN cohort thanks L. McMillan for overall study coordination and H. Mangalam, J. Farran, and A. Brenner for administering the University of California, Irvine High-Performance Computing cluster. The GIG cohort thanks M. Keil, E. Diekhof, T. Melcher, and I. Henseler for assistance in data acquisition. The IMPACT cohort acknowledges that, in this work, samples from the Netherlands node of IMPACT were used and the work was carried out on the Dutch national e-infrastructure with the support of the SURF Cooperative. The MCIC cohort thanks colleagues who served as mentors, advisers, and supporters during the inception and conduct of the study, including D. Goff, G. Kuperberg, J. Goldstein, M. Shenton, R. McCarley, S. Heckers, C. Wible, R. Meshulam-Gately, and M. Vangel; staff and clinicians at each site responsible for data acquisition, including S. Wallace, A. Cousins, R. Meshulam-Gately, S. Stufflebeam, O. Freudenreich, D. Holt, L. Kunkel, F. Fleming, G. He, H. Johnson, R. Pierson, A. Caprihan, P. Somers, C. Portal, K. Norman, D. South, M. Doty, and H. Milner; and L. Friedman, S. Posse, J. Jovicich, and T. Wassink for expert guidance on image and other types of data acquisition. MCIC also acknowledges the many research assistants, students, and colleagues who assisted in data curation over the years since data acquisition was completed, including S. Wallace, C. Zyloney, K. Sawlani, J. Fries, A. Scott, D. Wood, R. Wang, W. Courtney, A. Guimaraes, L. Shenkman, M. Kendi, A. T. Karagulle, K. Kendi, R. Muetzel, T. Biehl, and M. Schmidt. The MIRECC cohort thanks the U.S. military veterans who participated in this research. The MPIC cohort thanks R. Schirmer, E. Schreiter, R. Borschke, I. Eidner, and A. Olynik for supporting MR acquisition and data management, the staff of the Center of Applied Genotyping for generating the genotypes of the Munich Antidepressant Response Signature (MARS) cohort, D. P. Auer for initiating the RUD-MR substudy, E. Binder for supporting participation in ENIGMA, and GlaxoSmithKline for providing the genotypes of the Recurrent Unipolar Depression Case-Control Sample. The PAFIP cohort acknowledges the IDIVAL Neuroimaging Unit for imaging acquisition and analysis and Valdecilla Biobank for help with the technical execution of this work. The PDNZ cohort is grateful to M. MacAskill, D. Myall, L. Livingston, B. Young, and S. Grenfell; staff at the New Zealand Brain Research Institute and Pacific Radiology Christchurch for study coordination and image acquisition; and A. Miller for DNA preparation and banking. The QTIM cohort thanks the many research assistants, radiographers, and IT support staff for data acquisition and DNA sample preparation. The SHIP cohort is grateful to M. Stanke for the opportunity to use his Server Cluster for the SNP imputation, as well as to H. Prokisch and T. Meitinger (Helmholtz Zentrum München) for the genotyping of the SHIP-Trend cohort. The Sydney MAS cohort acknowledges that the genome-wide genotyping was performed by the Ramaciotti Centre, University of New South Wales. Acknowledgments from CHARGE replication cohorts: The Austrian Stroke Prevention Family/Austrian Stroke Prevention Family Study cohort thanks B. Reinhardt for her long-term administrative commitment, E. Hofer for technical assistance in creating the DNA bank, I. J. Semmler and A. Harb for DNA sequencing and analyses by TaqMan assays, and I. Poelzl for supervising the quality management processes after ISO9001 at the biobanking and DNA analysis stages. The Cardiovascular Health Study cohort thanks a full list of principal investigators and institutions that can be found at CHS-NHLBI.org. The Framingham Heart Study cohort (CHARGE) especially thanks investigators and staff from the Neurology group for their contributions to data collection. Generation and management of GWAS genotype data for the Rotterdam Study were executed by the Human Genotyping Facility of the Genetic Laboratory of the Department of Internal Medicine, Erasmus MC, Rotterdam, Netherlands. The Rotterdam Study cohort thanks P. Arp, M. Jhamai, M. Verkerk, L. Herrera, M. Peters, and C. Medina-Gomez for help with creating the GWAS database and K. Estrada, Y. Aulchenko, and C. Medina-Gomez for creation and analysis of imputed data. The Three-City Dijon cohort thanks A. Boland (CNG) for technical help in preparing the DNA samples for analyses. The investigators of the frontotemporal GWAS (69), the consortia members, and their acknowledgments are listed in the supplementary materials. **Funding:** This study was supported by U54 EBO20403 from the National Institutes of Health (NIH) Big
- Data to Knowledge (BD2K) Initiative, a cross-NIH partnership. Additional support was provided by R01 MH16147, R01 MH161671, P41 EB015922, RF1 AG051710, RF1 AG041915, R56 AG058854, R01 AG059874, R01 MH17601, the Michael J. Fox Foundation (MJFF; 14848), the Kavli Foundation, and National Health and Medical Research Council (NHMRC) Project Grant 1158127 (to S.E.M.). S.E.M. was funded by an NHMRC Senior Research Fellowship (APP1103623). K.L.G. was supported by APP1173025. L.C.-C. was supported by a QIMR Berghofer Fellowship. J.L.S. was supported by R01MH118349 and R00MH102357. The 1000BRAINS cohort thanks the Heinz Nixdorf Foundation (Germany) for generous support of the Heinz Nixdorf Recall Study, which is also supported by the German Federal Ministry of Education and Science (BMBF; FKZ 01EG940) and the German Research Foundation (DFG; ER 155/6-1). This work was further supported by the BMBF through the Integrated Network IntegraMent under the e.Med Program (01ZX1314A to S.C.) and the Swiss National Science Foundation (156791 to S.C.). The Initiative and Networking Fund of the Helmholtz Association supported S.Ca, the European Research Council (ERC) under the European Union's Horizon 2020 research and innovation program (H2020) supported S.Ci (Human Brain Project SG41, 720270) and supported S.Ca and S.Ci (Human Brain Project SG42, 785907). The Alzheimer's Disease Neuroimaging Initiative (ADNI1 and ADNI2G0) was supported by NIH (U01 AG024904) and Department of Defense ADNI (W81XWH-12-2-0012). ADNI is funded by the National Institute on Aging (NIA), the National Institute of Biomedical Imaging and Bioengineering, and through generous contributions from AbbVie; Alzheimer's Association; Alzheimer's Drug Discovery Foundation; Araclon Biotech; BioClinica, Inc.; Biogen; Bristol-Myers Squibb Company; CereSpir, Inc.; Cogstate; Eisai Inc.; Elan Pharmaceuticals, Inc.; Eli Lilly and Company; EuroImmun; F. Hoffmann-La Roche, Ltd., and its affiliated company Genentech, Inc.; Fujirebio; GE Healthcare; IXICO Ltd.; Janssen Alzheimer Immunotherapy Research & Development, LLC.; Johnson & Johnson Pharmaceutical Research & Development, LLC.; Lumosity; Lundbeck; Merck & Co., Inc.; Meso Scale Diagnostics, LLC; NeuroRx Research; Neurotrack Technologies; Novartis Pharmaceuticals Corporation; Pfizer, Inc.; Piramal Imaging; Servier; Takeda Pharmaceutical Company; and Transition Therapeutics. The Canadian Institutes of Health Research provided funds to support ADNI clinical sites in Canada. Private sector contributions were facilitated by the Foundation for the National Institutes of Health (FNIH) ([www.fnih.org](http://www.fnih.org)). The grantee organization is the Northern California Institute for Research and Education, and the study was coordinated by the Alzheimer's Therapeutic Research Institute at the University of Southern California. Samples used in this study were from the National Centralized Repository for Alzheimer's Disease and Related Dementias, which received government support under a cooperative agreement grant (U24 AG21886) awarded by the NIA. Support for data analysis was provided by NLM R01 LM012535 and NIA R03 AG054936 (to K.N.). The UK Medical Research Council (MRC) and Wellcome (102215/2/13/2) and the University of Bristol provide core support for ALSPAC. A comprehensive list of grants funding is available on the ALSPAC website ([www.bristol.ac.uk/alspac/external/documents/grant-acknowledgements.pdf](http://www.bristol.ac.uk/alspac/external/documents/grant-acknowledgements.pdf)). ALSPAC neuroimaging data were specifically funded by R01 MH085772 (to T.P.). GWAS data were generated by Sample Logistics and Genotyping Facilities at Wellcome Sanger Institute and LabCorp (Laboratory Corporation of America), with support from 23andMe. Data and sample collection by the Australian Schizophrenia Research Bank (ASRB) were supported by the Australian NHMRC, the Pratt Foundation, Ramsay Health Care, and the Viertel Charitable Foundation. The ASRB was also supported by the Schizophrenia Research Institute (Australia), with infrastructure funding from NSW Health and the Macquarie Group Foundation. DNA analysis was supported by the Neurobehavioral Genetics Unit, with funding from NSW Health and the NHMRC Project Grants (1067137, 1147644, 1051672). M.C. was supported by a NHMRC Senior Research Fellowship (1121474). C.P. was supported by a NHMRC Senior Principal Research Fellowship (628386 and 1105825). BETULA was supported by a Wallenberg Scholar grant from the Knut and Alice Wallenberg Foundation and a grant from Torsten and Ragnar Söderbergs Foundation to L.N., HelseVest RHF (911554 to S.L.H.), grants from the Bergen Research Foundation and the University of Bergen to S.L.H., grants from the Dr Einar Martens Fund and the K.G. Jebsen Foundation to S.L.H. and V.M.S., and the Research Council of Norway (177458/V 50 to T.E. and 204966/F 20 to L.T.W.). Nijmegen's BIG resource is part of Cognomics, a joint initiative by researchers of the Donders Centre for Cognitive Neuroimaging, the Human Genetics and Cognitive Neuroscience departments of the Radboud University Medical Center, and the Max Planck

## ACKNOWLEDGMENTS

We thank K. Courtney and M. R. Glass for making panels A and C, respectively, of the summary figure. We thank all cohort participants for making this work possible. We thank the research support staff of all cohorts, including interviewers, computer and laboratory technicians, clerical workers, research scientists, volunteers, managers, receptionists, nurses, carers, participating general practitioners, and pharmacists. In addition, the ALSPAC cohort is grateful to the midwives for their help in recruiting the families who participated in the study and to L. B. Clauss for help during the quality control process of the ALSPAC neuroimaging data. The BETULA cohort thanks the Centre for Advanced Study at the Norwegian Academy of Science and Letters in Oslo for hosting collaborative projects and workshops between Norway and



Institute for Psycholinguistics (funded by the Max Planck Society). Support for the Cognomics Initiative, including phenotyping and genotyping of BIG cohorts, comes from funds of the participating departments and centers and from external national grants: the Biobanking and Biomolecular Resources Research Infrastructure (Netherlands) (BBMRI-NL), the Hersenstichting Nederland, and the Netherlands Organisation for Scientific Research (NWO), including the NWO Brain & Cognition Excellence Program (433-09-229) and the Vici Innovation Program (016-130-669 to B.F.). Additional support was received from the European Union's Seventh Framework Program (FP7) [602805 (Aggressotype), 602450 (IMAGEMEND), and 278948 (TACTICS)], from H2020 [643051 (MIND) and 667302 (CoCA)], and from the Innovative Medicines Initiative 2 Joint Undertaking (H2020/EFPIA) [115916 (PRISM)]. BONN was supported by the Frankfurt Institute for Risk Management and Regulation, and B.W. was supported by a Heisenberg Grant of the DFG [WE 4427 (3-2)]. BrainScale was supported by NWO (NWO 51.02.061 to H.E.H.P., NWO 51.02.062 to D.I.B., NWO-NIHC Programs of excellence 433-09-220 to H.E.H.P., NWO-MagW 480-04-004 to D.I.B., and NWO/SPI 56-464-14192 to D.I.B.), FP7 Ideas: European Research Council (ERC-230374 to D.I.B.), and Universiteit Utrecht (High Potential Grant to H.E.H.P.). CARDIFF genotyping was supported by the National Centre for Mental Health. T.M.L. is funded by a Sêr Cymru II Fellowship (East Wales European Regional Development Funds (PNU-80762-CU-14) at the Dementia Research Institute, Cardiff University). DNS received support from Duke University as well as NIH (R01DA033369 and R01DA031579). Work from the London cohort of EPIGEN was supported by research grants from the Wellcome Trust (084730 to S.M.S.), University College London (UCL)/University College London Hospitals (UCLH) National Institute for Health Research (NIHR) Biomedical Research Centre/ Specialist Biomedical Research Centres (CBRC/SBRC) (114 to S.M.S.), the Comprehensive Local Research Network Flexibility and Sustainability Funding (CEL1300 to S.M.S.), The Big Lottery Fund, the Wolfson Trust, and the Epilepsy Society. This work was partly undertaken at UCLH/UCL, which received a proportion of funding from the NIHR CBRC/SBRC. FBIRN was supported by the NIH National Center for Research Resources (NCRR) [NIH 1 U24 RR021992 (Function Biomedical Informatics Research Network), NIH 1 U24 RR025736-01 (Biomedical Informatics Research Network Coordinating Center)], the NIH National Center for Research Resources and the National Center for Advancing Translational Sciences (UL1 TR000153), and the NIH through 5R01MH094524, and P20GM103472. This work was supported in part by a Merit Review Award I01CX000497 (J.M.F.) and a Senior Research Career Award (J.M.F.) from the U.S. Department of Veterans Affairs, Clinical Sciences Research and Development Service. FOR2107 was funded by the DFG (FOR2107 DA1151/5-1, DA1151/5-2 to U.K.; JA1890/7-1, JA1890/7-2 to A.J.; KI 588/14-1, KI 588/14-2 to T.D.; KR 3822/7-1, KR 3822/7-2 to A.K.; N0246/10-1, N0246/10-2 to M.M.N.). GOBS was supported by the National Institute of Mental Health MH070813 (to D.C.G.), MH078111 (to J.B.I.), and MH083824 (to D.C.G. and J.B.I.). The Brain Genomics Superstruct Project (GSP) was made possible by the resources provided through Shared Instrumentation Grants ISI0RR023043 and ISI0RR023401 and was supported by funding from the Simons Foundation (to R.L.B.); the Howard Hughes Medical Institute (to R.L.B.); NIMH grants R01-MH079799 (to J.W.S.), K24MH094614 (to J.W.S.), and K01MH099232 (to A.J.H.); and the Massachusetts General Hospital–University of Southern California Human Connectome Project (U54MH091665). The HUBIN cohort was supported by the Swedish Research Council (2006-2992, 2006-986, K2007-62X-15077-04-1, K2008-62P-20597-01-3, 2008-2167, 2008-7573, K2010-62X-15078-07-2, K2012-61X-15078-09-3, 14266-01A, 02-03, 2017-949), the regional agreement on medical training and clinical research between Stockholm County Council and the Karolinska Institutet, the Knut and Alice Wallenberg Foundation, and the HUBIN project. HUNT-MRI was funded by the Liaison Committee between the Central Norway Regional Health Authority and the Norwegian University of Science and Technology, and the Norwegian National Advisory Unit for functional MRI. IMAGEN was supported by the European Union's FP6 Integrated Project IMAGEN (LSHM-CT-2007-037286), the H2020 ERC Advanced Grant STRATIFY (695313), ERANID (PR-ST-0416-10004), BRIDGET (JPND: MR/N027558/1), the FP7 projects IMAGEMEND (602450) and MATRICS (603016), the Innovative Medicine Initiative Project EU-AIMS (115300-2), the Medical Research Foundation and MRC (MR/R00465X/1), the MRC (MR/N000390/1), the Swedish Research Council FORMAS, the NIHR Biomedical Research Centre at South London and Maudsley NHS Foundation Trust and King's College London, the BMBF (01GS08152, 01EV0711, eMED SysAlc01ZX1311A, Forschungsnetz

AERIAL), and the DFG (SM 80/7-1, SM 80/7-2, SFB 940/1). Further support was provided by ANR (AF12-NEUR0008-01 – WM2NA, and ANR-12-SAMA-0004), the Fondation de France, the Fondation pour la Recherche Médicale, the Mission Interministérielle de Lutte-contre-les-Drogues-et-les-Conduites-Addictives (MILDECA), the Fondation pour la Recherche Médicale (DPA20140629802), the Fondation de l'Avenir, Paris Sud University IDEX 2012, Science Foundation Ireland (16/ERCDF/3797), and the NIH (R01 MH085772-01A1). IMH was supported by National Healthcare Group, Singapore (SIG/05004; SIG/05028), and Singapore Biomedicine Consortium (RP C-009/2006) research grants awarded to K.S.; M.La. was supported by a National Medical Research Council Research Training Fellowship (MH095: 003/008-1014) and Singapore Ministry of Health National Medical Research Council Center Grant (NMRC/CG/004/2013). IMpACT was supported by the NWO (433-09-229) and the Vici Innovation Program (016-130-669 to B.F.). Additional support was received from the ERC under FP7 [602805 (Aggressotype), 602450 (IMAGEMEND), and 278948 (TACTICS)] as well as from H2020 [643051 (MIND), 667302 (CoCA), and 728018 (Eat2beNICE)]. LBC1936 was supported by a Research into Aging program grant (to I.J.D.) and the Age UK-funded Disconnected Mind project [www.disconnectedmind.ed.ac.uk](http://www.disconnectedmind.ed.ac.uk); to I.J.D. and J.M.W.), with additional funding from the UK MRC (Mr/M01311/1, G1001245/96077, G0701120/79365 to I.J.D., J.M.W. and M.E.B.). The whole-genome association part of this study was funded by the Biotechnology and Biological Sciences Research Council (BBSRC; BB/F019394/1). J.M.W. is supported by the Scottish Science Council through the SINAPSE Collaboration ([www.sinapse.ac.uk](http://www.sinapse.ac.uk)). COACE (MRC MR/K026992/1) is funded by the BBSRC and MRC. LIBD was supported by direct funding from the NIMH intramural research program of the NIH to the Weinberger laboratory and by support from the Lieber Institute for Brain Development and the Maltz Research Laboratories. MCIC was supported primarily by U.S. Department of Energy DE-FG02-99ER62764 through its support of the Mind Research Network (MRN, formerly known as the MIND Institute) and the consortium as well as by the National Association for Research in Schizophrenia and Affective Disorders (NARSAD) Young Investigator Award (to S.E.h.), through the Blowitz-Ridgeway and Essel Foundations and a ZonMw Top 91211021 (to T.W.h.), a DFG research fellowship (to S.E.h.), the MRN, the NIH through NCR 5M01-RR001066 (MGH General Clinical Research Center), NIMH K08 MH068540, the Biomedical Informatics Research Network with NCR Supplements to P41 RR14075 (MGH), M01 RR 01066 (MGH), NIBIB R01EB006841 (MRN), R01EB005846 (MRN), 2R01 EB000840 (MRN), 1RC1MH089257 (MRN), as well as grant U24 RR021992. Mnet-CT was supported by the Medical Research Council, South Africa. MIRECC was supported by NIMH (1R01MH11671) and the U.S. Department of Veterans Affairs (V5N6 MIRECC). MoodDS was supported by the BMBF grants [National Genome Research Network Plus (MoodDS: Systematic Investigation of the Molecular Causes of Major Mood Disorders and Schizophrenia, [www.ngfn.de/en/schizophrenie.html](http://www.ngfn.de/en/schizophrenie.html)); eMed Programme: Integrated Network IntegratMent (01ZX1314A to M.M.N.; 01ZX1614A to F.D. and M.M.N.)] and by DFG (FOR 1617) as well as Excellence Cluster (EXC 257). MPiP was supported by a grant of the Exzellenz-Stiftung of the Max Planck Society and by the BMBF National Genome Research Network (FKZ 01GS0481). MPRC was supported by the NIH (R01MH116948, R01MH112180, U01MH108148, UG3DA047685, 2R01EB015611, R01DA027680, R01MH085646, P50MH103222, U54 EB020403, and T32MH067533), NSF (IIS-1302755 and MRI-1531491), a state of Maryland contract (M00B6400091), and a Pfizer research grant. MÜNSTER was funded by the DFG (SFB-TRR58, Projects CO9 and ZO2 to U.D.) and the Interdisciplinary Center for Clinical Research of the medical faculty of Münster (Dan3/012/17 to U.D.). NCNG was supported by the Bergen Research Foundation, the University of Bergen, the Research Council of Norway [FUGE (151904 and 183327), Psykisk Helse (175345), RCN (154313/V50 to I.R. and 177458/V50 to T.E.)], Helse Sørøst RHF (2012086 to T.E.), and the Dr Einar Martens Fund. NESDA obtained funding from the NWO (Geestkracht program 10-000-1002), the Center for Medical Systems Biology (CSMB, NWO Genomics), BBMRI-NL, VU University's Institutes for Health and Care Research (EMGO+) and Neuroscience Campus Amsterdam, University Medical Center Groningen, Leiden University Medical Center, and NIH (R01DA042157-01A, MH081802, Grand Opportunity grants IRC2 MH089951 and IRC2 MH089995). Parts of the genotyping and analyses efforts were funded by the Genetic Association Information Network (GAIN) of the FNIH. Computing was supported by BiG Grid, the Dutch e-Science Grid, which is financially supported by NWO. The NeuroIMAGE study was

supported by NIH grant R01MH62873, NWO Large Investment Grant 1750102007010 (to J.K.B.), ZonMW grant 60-60600-97-193, NWO grants 056-13-015 and 433-09-242, and matching grants from Radboud University Nijmegen Medical Center, University Medical Center Groningen and Accare, and Vrije Universiteit Amsterdam. Further support was received from the FP7 [278948 (TACTICS), 602450 (IMAGEMEND), 602805 (Aggressotype)], and H2020 [667302 (CoCA) and 728018 (Eat2beNICE)]. The Netherlands Twin Register (NTR) obtained funding from NWO and ZonMW grants (904-61-090, 985-10-002, 912-10-020, 904-61-193, 480-04-004, 463-06-001, 451-04-034, 400-05-717, Addition-31160008, 016-115-035, 481-08-011, 056-32-010, Middelgroot-911-09-032, OCW\_NWO Gravity program – 024.001.003, NWO-Groot 480-15-001/674), Center for Medical Systems Biology (CSMB, NWO Genomics), NBIC/BioAssist/RK (2008.024), BBMRI-NL (184.021.007 and 184.033.111); Spinozapremie (NWO- 56-464-14192), KNAW Academy Professor Award (PAH/6635), and University Research Fellow grant to D.I.B.; Amsterdam Public Health research institute (former EMGO+), Neuroscience Amsterdam research institute (former NCA); the European Science Foundation (EU/QLRT-2001-01254), FP7 [FP7-HEALTH-F4-2007-2013: 01413 (ENGAGE) and 602768 (ACTION)]; the ERC (ERC Advanced, 230374, ERC Starting grant 284167), Rutgers University Cell and DNA Repository (NIMH U24 MH068457-06), the NIH (R01DA042157-01A, R01MH58799-03, MH081802, DA018673, R01 DK092127-04, Grand Opportunity grants IRC2 MH089951, and IRC2 MH089995); and the Avera Institute for Human Genetics. Parts of the genotyping and analyses efforts were funded by the Genetic Association Information Network (GAIN) of the FNIH. Computing was supported by NWO through 2018/EW/00408559, BiG Grid, the Dutch e-Science Grid and SURFSARA. OATS was supported by the Australian NHMRC/Australian Research Council Strategic Award (401162) and NHMRC Project Grant (1405325). The study was facilitated through Twins Research Australia, a national resource partly supported by a Centre for Research Excellence from the NHMRC. DNA was extracted by Genetic Repositories Australia (NHMRC grant 401184). Genome-wide genotyping at the Diamantina Institute, University of Queensland, was partly funded by a CSIRO Flagship Collaboration Fund Grant. OSAKA was supported by AMED under JP18dm0307002, JP18dm0207006 (Brain/MINDS) and JSPS KAKENHI J16H05375. PAFIP was supported by the Instituto de Salud Carlos III (PI14/00639 and PI14/00918), MINECO (SAF2010-20840-CO2-02 and SAF2013-46292-R), and Fundación Instituto de Investigación Marqués de Valdecilla (NCT0235832 and NCT02534363). PDNZ was supported by the Health Research Council, the Neurological Foundation of New Zealand, Canterbury Medical Research Foundation, University of Otago Research Grant, and Jim and Mary Carney Charitable Trust (Whangarei, New Zealand). PING was supported by the National Institute on Drug Abuse (RC2DA029475) and the U.S. National Institute of Child Health and Human Development (R01HD061414). Parkinson's Progression Markers Initiative (PPMI), a public-private partnership, is funded by the Michael J. Fox Foundation for Parkinson's Research and funding partners, including AbbVie, Allegran, Avid Radiopharmaceuticals, Biogen Idec, BioLegend, Bristol-Meyers Squibb, Denali Therapeutics, GE Healthcare, Genentech, GSK-GlaxoSmithKline, Eli Lilly & Co., F. Hoffman-La Roche Ltd., Lundbeck Pharmaceuticals, Merck & Co., MSD-Meso Scale Discovery, Pfizer, Piramal, Sanofi Genzyme, Servier, Takeda Pharmaceutical Company, TEVA Pharmaceutical Industries, UCB Pharma SA, and Golub Capital ([www.ppmi-info.org/about-ppmi/who-we-are/study-sponsors/](http://www.ppmi-info.org/about-ppmi/who-we-are/study-sponsors/)). QTIM was supported by the National Institute of Child Health and Human Development (R01 HD050735), National Institute of Biomedical Imaging and Bioengineering (Award IU54EB020403-01, Subaward 56929223), and NHMRC (Project Grants 496682, 1009064 and Medical Bioinformatics Genomics Proteomics Program 3389891). SHIP is part of the Community Medicine Research net of the University of Greifswald, Germany, which is funded by the DFG (01Z29603, 01ZZ0103, and 01ZZ0403), the Ministry of Cultural Affairs, the Social Ministry of the Federal State of Mecklenburg-West Pomerania, and the network "Greifswald Approach to Individualized Medicine (GANI\_MED)" funded by the DFG (031Z2061A). Whole-body MRI was supported by a joint grant from Siemens Healthineers, Erlangen, Germany, and the federal state of Mecklenburg–West Pomerania. Genome-wide data have been supported by the DFO (03ZIK012) and a joint grant from Siemens Healthineers, Erlangen, Germany, and the federal state of Mecklenburg–West Pomerania. The University of Greifswald is a member of the Caché Campus program of InterSystems, GmbH. Sydney MAS was supported by the NHMRC/Australian Research Council Strategic Award (401162) and NHMRC Program Grants



(350833, 568969). DNA was extracted by Genetic Repositories Australia (NHMRC Grant 401184). SYS has been funded by the Canadian Institutes of Health Research and the Heart and Stroke Foundation of Canada. Computations were performed on the GPC supercomputer at the SciNet HPC Consortium. SciNet is funded by the Canada Foundation for Innovation under the auspices of Compute Canada; the government of Ontario; Ontario Research Fund—Research Excellence, and the University of Toronto. TCD-NUIG included data from two sites. NUI Galway data collection was supported by the Health Research Board (HRA\_POR/2011/100). Trinity College Dublin was supported by The Science Foundation Ireland Research Investigator project (12.IP.1359 to G.D.). TOP and TOP3T are part of TOP, which is supported by the Research Council of Norway (223273, 213837, 249711, 226971, 262656), the South East Norway Health Authority (2017-112), the Kristian Gerhard Jebsen Stiftelsen (SKGJ-MED-008), and the FP7 [602450 (IMAGEMEND)]. UIO2016 and UIO2017 are part of TOP and STROKEMRI, which are supported by the Norwegian ExtraFoundation for Health and Rehabilitation (2015/F05146), the Research Council of Norway (249795, 248238), and the South-Eastern Norway Regional Health Authority (2014097, 2015044, 2015073). The UMCU cohort consists of several independent studies, which were supported by ZonMw TOP 40-008-12-98-13009, the Geestkracht program of the ZonMw (10-000-1001), the Stanley Medical Research Institute (Dr. Nolen), the Brain and Behavior Research Foundation (2013-2015 NARSAD Independent Investigator grant 20244 to M.H.J.H.), NWO (2012-2017 VIDI grants 452-11-014 to N.E.M.v.H. and 917-46-370 to H.E.H.P.), and ZonMw (908-02-123 to H.E.H.P.). UNICAMP was supported by FAPESP (São Paulo Research Foundation) 2013/07559-3; the Brazilian Institute of Neuroscience and Neurotechnology (BRINNN). Collection of chimpanzee brain images was supported by the NIH (NS-42867, NS-73134, and NS-92988). The views expressed in this manuscript are those of the authors and do not necessarily represent the views of the National Heart, Lung, and Blood Institute; the NIH; or the U.S. Department of Health and Human Services. Infrastructure for the CHARGE Consortium is supported in part by the National Heart, Lung, and Blood Institute (NHLBI; HL105756) and for the neuroCHARGE phenotype working group through the NIA (AG033193). H.H.H.A. was supported by the Netherlands Organization for the Health Research and Development (ZonMw; 916.19.151). The Atherosclerosis Risk in Communities Study (ARIC) was a collaborative study supported by the NHLBI (HHSN268201100005C, HHSN268201100006C, HHSN268201100007C, HHSN268201100008C, HHSN268201100009C, HHSN268201100010C, HHSN268201100011C, HHSN268201100012C, R01HL70825, R01HL087641, R01HL59367, and R01HL086694); the National Human Genome Research Institute (U01HG004402); and the NIH (HHSN268200625226C). Infrastructure was partly supported by UL1R025005, a component of the NIH and NIH Roadmap for Medical Research. This project was partially supported by NIH R01 grants HL084099 and NS087541 (to M.Fo.). The Austrian Stroke Prevention Family/Austrian Stroke Prevention Family Study databank was supported by the Medical University of Graz and the Steiermärkische Krankenanstaltengesellschaft. The research reported in this article was funded by the Austrian Science Fund (P1904, P20545-P05 and P13180), the Austrian National Bank Anniversary Fund (P15435), and the Austrian Ministry of Science under the aegis of the EU Joint Programme—Neurodegenerative Disease Research (JPND; [www.jpnd.eu](http://www.jpnd.eu)). The Cardiovascular Health Study was supported by NHLBI (HHSN268201200036C, HHSN268200800007C, N01HC55222, N01HC85079, N01HC85080, N01HC85081, N01HC85082, N01HC85083, N01HC85086, U01HL080295, R01HL087652, R01HL105756, R01HL103612, R01HL120393, and R01HL130114), with additional contribution from the National Institute of Neurological Disorders and Stroke. Additional support was provided through R01AG023629, R01AG15928, and R01AG033193 from the NIA. The provision of genotyping data was supported in part by the National Center for Advancing Translational Sciences, CTSI grant UL1TR000124, and the National Institute of Diabetes and Digestive and Kidney Disease Diabetes Research Center grant DK063491 to the Southern California Diabetes Endocrinology Research Center. The Erasmus Rucphen Family Study was supported by the Consortium for Systems Biology, within the framework of the Netherlands Genomics Initiative (NGI)/NWO. ERF as a part of EUROSPAN (European Special Populations Research Network) was supported by the European Commission's 5th Framework Programme (FP5) (QLG2-CT-2002-01254), the FP6 (018947; LSHG-CT-2006-01947), and the FP7 (HEALTH-F4-2007-201413 and 602633). High-throughput analysis of the ERF data was supported by a joint grant from the Netherlands Organisation for

Scientific Research and the Russian Foundation for Basic Research (NWO-RFBR 047.017.043). High-throughput metabolomics measurements of the ERF study were supported by BMMRI-NL. The Framingham Heart Study was supported by the National Heart, Lung, and Blood Institute's Framingham Heart Study (N01-HC-25195 and HHSN268201500001) and its contract with Affymetrix, Inc., for genotyping services (N02-HL-6-4278). A portion of this research used the Linux Cluster for Genetic Analysis (LinGA-II) funded by the Robert Dawson Evans Endowment of the Department of Medicine at Boston University School of Medicine and Boston Medical Center. This study was also supported by grants from the NIA (R01s AG033040, AG033193, AG054076, AG049607, AG008122, AG016495, and U01-AG049505) and the National Institute of Neurological Disorders and Stroke (R01-NS017950). C.Dec. is supported by the Alzheimer's Disease Center (P30 AG 010129). LIFE-Adult: LIFE-Adult is funded by the Leipzig Research Center for Civilization Diseases (LIFE). LIFE is an organizational unit affiliated with the Medical Faculty of the University of Leipzig. LIFE is funded by means of the European Union, the European Regional Development Fund, and funds of the Free State of Saxony within the framework of the excellence initiative. This work was also funded by the DFG (CRC 1052 "Obesity mechanisms" project A1) and the Max Planck Society. The Rotterdam Study was funded by Erasmus Medical Center and Erasmus University, Rotterdam; ZonMw; the Research Institute for Diseases in the Elderly (RIDE); the Ministry of Education, Culture and Science; the Ministry for Health, Welfare and Sports; the European Commission (DG XII); and the municipality of Rotterdam. The GWAS datasets are supported by NWO Investments (175.010.2005.011, 911-03-012); the Genetic Laboratory of the Department of Internal Medicine, Erasmus MC; the Research Institute for Diseases in the Elderly (014-93-015; RIDE2); and the NGI/NWO Netherlands Consortium for Healthy Aging (050-060-810). This work was performed as part of the CoSTREAM project ([www.costream.eu](http://www.costream.eu)) and received funding from H2020 (667375). The Three-City Dijon study was conducted under a partnership agreement among the Institut National de la Santé et de la Recherche Médicale (INSERM), the University of Bordeaux, and Sanofi-Aventis. The Fondation pour la Recherche Médicale funded the preparation and initiation of the study. The 3C Study is also supported by the Caisse Nationale Maladie des Travailleurs Salariés, Direction Générale de la Santé, Mutuelle Générale de l'Éducation Nationale, Institut de la Longévité, Conseils Régionaux de Aquitaine and Bourgogne, Fondation de France, and Ministry of Research—INSERM Programme "Cohortes et collections de données biologiques". S.Deb. received investigator-initiated research funding from the French National Research Agency (ANR) and from the Fondation Leducq. S.Deb. is supported by a starting grant from the European Research Council (SEGWAY), a grant from the Joint Programme of Neurodegenerative Disease research (BRIDGE), H2020 (643417 and 640643), and the Initiative of Excellence of Bordeaux University. This work was supported by the National Foundation for Alzheimer's Disease and Related Disorders, the Institut Pasteur de Lille, the labex DISTALZ, and the Centre National de Génotypage. The Vietnam Era Twin Study of Aging (VETSA) was supported by the U.S. NIH VA San Diego Center of Excellence for Stress and Mental Health R00DA023549, DA-18673, NIA R01 AG018384, R01 AG018386, R01 AG022381, R01 AG022982, R01 DA025109 05, R01 HD050735, K08 AG047903, R03 AG 046413, and R01 HD050735-01A2. **Author contributions:** Central analysis and coordination group: C.R.K.C., D.P.H., F.P., J.Br., J.L.S., J.N.P., K.L.G., L.C.-C., L.C.P.Z., L.T.S., M.A.B.M., N.J., N.S., P.A.L., P.M.T., S.E.M., and S.I.T. Manuscript writing, preparation, and revision: A.H.Z., D.P.H., J.Br., J.L.S., J.N.P., K.L.G., L.C.-C., N.J., P.A.L., P.M.T., and S.E.M. Project support: D.Ga., M.A.B.M., M.J., N.S., R.E., V.R., and Y.G. Cohort principal investigators: A.A.V., A.C., A.H., A.J.F., A.J.H., A.K.H., A.M.D., A.M.-L., A.R.H., A.W.T., B.C.-F., B.F., B.Mo., B.S.P., B.W., B.W.J.H.P., C.A.H., C.Dep., C.F., C.M., C.M.L., C.P., D.Am., D.C.G., D.I.B., D.J.S., D.P., D.R.W., D.v.E., E.G.J., E.J.C.d.G., L.E.H., F.A.H., F.C., G.D., G.F., G.G.B., G.L.C., G.S., H.B., H.E.H.P., H.F., H.G.B., H.J.G., H.V., H.W., I.A., I.E.Som., I.J.D., I.M., J.B.J.K., J.B.I., J.C.Be., J.C.D.-A., J.K.B., J.-L.M., J.L.R., J.N.T., J.O., J.R.B., J.W.S., J.Z., K.L.M., K.S., L.M.R., L.N., L.R., L.T.W., M.E.B., M.H.J.H., M.J.C., M.J.W., M.K.A., M.R., N.D., N.J., N.J.A.v.d.W., O.A.A., O.G., P.G.S., P.J.H., P.K., P.M.T., P.S.S., P.T.M., R.A.M., R.A.O., R.H., R.J.S., R.L.B., R.L.G., R.S.K., S.Ca., S.Des., S.E.F., S.L.H., S.M.S., R.R., T.E., T.J.A., T.J.C.P., T.L.J., T.P., T.T.J.K., U.D., V.C., V.J.C., W.C., W.U.H., X.C., and Z.P. Imaging data collection: A.B., A.d.B., A.F.M., A.J., A.J.H., A.K., A.K.H., A.L.G., A.M.D., A.N.H., A.P., A.R.H., A.R.K., A.U., B.A.M., B.-C.H., B.D., B.F., G.B.P., B.W., B.W.J.H.P., C.B., C.D.W., C.J., C.L.B., C.L.Y., C.M., C.P., C.R.J., C.S.Re., D.Am., D.C.G., D.Gr., D.H.M., D.J., D.J.H., D.J.V., D.M.C., D.P.O., D.R.W.,

D.S.O., D.T.-G., D.v.E., D.v.R., D.Z., E.A., E.B.Q., E.J.C.d.G., L.E.H., E.Sh., G.B.P., G.D., G.F., G.I.d.Z., G.L.C., G.R., G.S., H.V., H.Y., I.A., I.E.Som., J.A.T., J.E.C., J.E.N., J.K.B., J.-L.M., J.-L.M., J.L.R., J.M.F., J.M.W., J.N.T., J.R., J.T.V., K.D., K.K., K.L.M., K.O.L., K.S., L.M.R., L.R., L.T.W., M.B.H., M.E.B., M.Fu., M.H.J.H., M.Ho., M.-J.v.T., M.J.W., M.-L.P.M., N.E.M.v.H., N.F.H., N.H., N.J.A.v.d.W., N.K.H., N.O., O.G., P.A.G., P.E.R., P.G.S., P.K., P.N., P.S.S., R.A.O., R.B., R.H., R.L.B., R.L.G., R.R., R.S.K., R.W., S.A., S.C.M., S.Ca., S.Er., S.Ko., S.M., S.M.S., T.G.M.v.E., T.R.M., T.W.H., T.W.M., U.D., U.S., V.C., V.J.C., V.S.M., W.D.H., W.H., W.W., and X.C. Imaging data analysis: A.F.M., A.H.Z., A.J.H., A.J.S., A.L.G., A.M.D., A.R., A.R.K., A.S., A.Th., A.U., B.A.G., B.C.R., B.F., B.K., B.S.P., C.B., C.C.F., C.C.H., C.D.W., C.J., C.L.Y., C.R.K.C., C.S.Re., D.Ai., D.C.G., D.Gr., D.H., D.J., D.J.H., D.M.C., D.P.H., D.P.O., D.T.-G., D.v.d.M., D.v.E., D.v.R., D.Z., E.E.L.B., E.Sh., E.Sp., E.W., F.M.R., F.F., F.S., G.I.d.Z., G.R., H.J.G., I.A., I.E.Som., I.K.A., J.A.T., J.B.J.K., J.C.V.M., J.-L.M., J.L.R., J.L.S., J.M.W., J.R., J.Z., K.D., K.L.M., K.N., K.S., K.W., L.B.L., L.H., L.Sa., L.Sc., L.Sh., L.T.S., L.T.W., L.V.e., L.C.P.Z., M.A., M.A.H., M.B.H., M.C., M.E.B., M.Fu., M.Ho., M.J.G., M.-J.v.T., M.J.W., M.Ki., M.La., M.P.Z., M.W., N.E.M.v.H., N.F.H., N.J., N.O., N.T.D., O.G., P.G.S., P.K., P.M.T., P.N., R.B., R.S.P., R.L.G., R.M.B., R.R., S.A., S.Ca., S.Des., S.Eh., S.Er., S.F.F., S.I.T., S.Ka., S.Ke., S.L.R., S.M.C.d.Z., S.R.M., T.A., T.A.L., T.G., T.G.M.v.E., T.J., T.K., T.L.P., T.P.G., T.R.M., T.W.H., T.Wo., T.W.M., U.D., W.W., X.C., Y.Q., and Z.Z. Genetic data collection: A.A.A., A.A.-K., A.d.B., A.J.F., A.J.H., A.J.S., A.K.H., A.M.D., A.P., A.R.H., A.R.K., B.-C.H., B.F., B.Mo., B.T.B., B.W., B.W.J.H.P., C.B., C.D.W., C.F., C.M., C.P., C.P.D., C.S.Re., D.C.G., D.H.M., D.R.W., D.W.M., D.Z., E.A., E.B.Q., E.G.J., E.J.C.d.G., L.E.H., F.D., F.M., F.R.T., G.D., G.E.D., G.F., G.H., G.L.C., G.S., H.V., H.Y., I.E.Som., I.J.D., J.A.T., J.B.J.K., J.B.I., J.E.C., J.E.N., J.-J.H., J.L.L., J.K.B., J.-L.M., J.-L.M., J.L.R., J.M.F., J.Q.W., J.R., J.W.S., K.A.M., K.D., K.O.L., K.S., L.M.R., L.R., L.Sh., M.A.K., M.F.D., M.H.J.H., M.Ha., M.Ho., M.J.C., M.J.W., M.La., M.-L.P.M., M.M.N., M.N., N.A.K., N.E.M.v.H., N.G.M., N.J.A.v.d.W., N.K.H., N.O., O.G., P.A.T., P.H., P.K., P.R.S., P.S.S., R.A.O., R.C.G., R.H., R.L.B., R.R., R.Se., R.S.K., R.W., S.A., S.Ci., S.D.J., S.E.F., S.Eh., S.Er., S.H., S.L.H., S.M.S., T.G.M.v.E., T.J.A., T.K.d.A., T.L.P., T.W.M., U.D., V.C., V.J.C., V.M.S., and X.C. Genetic data analysis: A.A.-K., A.J.F., A.J.H., A.J.S., A.M.D., A.R.K., A.Te., A.Th., B.C.-D., B.F., B.K., B.M.-M., B.P., B.S.P., B.T.B., C.C.F., C.D.W., C.L.V., C.S.Re., C.S.Ro., C.W., C.Y.S., D.C.G., D.K., D.P.H., D.v.d.M., D.v.E., E.G.J., L.E.H., E.V., E.W., F.M., H.-R.E., I.E.Som., I.E.Som., I.E.Son., I.L.-C., I.O.F., J.B.I., J.Br., J.F.P., J.H.V., J.-J.H., J.L.R., J.L.S., J.N.P., J.Q.W., J.R.A., J.S., J.W.C., J.W.S., K.E.T., K.L.G., K.N., L.C.-C., L.M.O.L., L.Sh., L.C.P.Z., M.A.A.A., M.B., M.E.G., M.Fu., M.Ha., M.I., M.J., M.J.C., M.J.W., M.Ki., M.Ki., M.Kn., M.La., M.Lu., M.M.J.v.D., N.A.G., N.G.M., N.J., N.J.A., N.K.H., N.M.-S., N.R.M., O.G., P.A.L., P.G.S., P.H., P.H.L., P.K., P.M.T., P.R.S., Q.C., R.A.O., R.M.B., R.R., R.Se., S.Da., S.Des., S.E.M., S.Eh., S.G., S.H., S.H.W., S.L.H., S.M.C.d.Z., S.N., S.R.M., T.A.L., T.G., T.G.M.v.E., T.J., T.K.d.A., T.M.L., W.R.R., Y.M., and Y.W. CHARGE study design: B.Ma., C.Dec., C.L.S., E.H., G.V.R., H.H.H.A., H.J.G., J.C.Bi., L.L., M.A.I., M.Fo., O.L.L., Q.Y., R.Sc., S.Deb., S.S., T.H.M., T.P., V.G., and W.T.L. **Competing interests:** A.M.D. is a founder of CorTechs Labs, Inc., and has received funding through a Research Agreement between General Electric Healthcare and the University of California, San Diego. The terms of this arrangement have been reviewed and approved by the University of California, San Diego, in accordance with its conflict of interest policies. B.F. has received educational speaking fees from Shire and Medice. B.W.J.H.P. has received (nonrelated) research funding from Boehringer Ingelheim and Janssen Research. C.D.W. is currently an employee of Biogen. C.R.J. consults for Lilly and serves on an independent data monitoring board for Roche but receives no personal compensation from any commercial entity. C.R.J. receives research support from NIH and the Alexander Family Alzheimer's Disease Research Professorship of the Mayo Clinic. D.H.M. is a consultant for Boehringer Ingelheim, GW/Greenwich Biosciences, and Aptinyx. D.J.S. has received research grants and/or consultancy honoraria from Lundbeck and Sun. D.P.H. is currently an employee of Genentech, Inc., and was previously employed by Janssen R&D, LLC. H.B. is on the advisory board for Nutricia Australia. R.S.K. has consulted for Alkermes, Otsuka, Luye Pharma, and Sunovion and has received speaker fees from Janssen-Cilag and Lundbeck. None of the other authors declare any competing financial interests. H.J.G. has received travel grants and speaker honoraria from Fresenius Medical Care, Neuraxpharm, and Janssen Cilag. H.J.G. has received research funding from the German Research Foundation, the German Ministry of Education and Research, the DAMP Foundation, Fresenius Medical Care, the EU Joint Programme Neurodegenerative Disorders, and the European Social Fund. L.E.H. has received or is planning to receive research funding or consulting fees from Mitsubishi; Your Energy Systems,

LLC; Neuralstem; Taisho; Heptares; Pfizer; Sound Pharma; Luye Pharma; Takeda; and Regeneron. N.H. is a stockholder of Siemens AG, Erlangen, Germany. R.B. has received travel grants and speaker honoraria from Bayer Healthcare, AG. R.L.B. is a paid consultant for Roche. **Data and materials availability:** The meta-analytic results presented in this paper are available to download from the ENIGMA consortium website (<http://enigma.ini.usc.edu/research/download-enigma-gwas-results>). Access to cohort data is available either through public repositories or directly from the cohort. Direct requests are required when informed consent or the approved study protocol does not permit deposition into a repository. Requests for data by qualified investigators are subject to scientific and ethical review to ensure that the data will be used for valid scientific research and to ensure compliance with confidentiality, consent, and data protection regulations. Some of the data are subject to material transfer agreements or data transfer agreements, and specific details on how to access data for each cohort are available in table S20.

Katrina L. Grasby<sup>1\*†</sup>, Neda Jahanshad<sup>2\*†</sup>, Jodie N. Painter<sup>†</sup>, Lucia Colodro-Conde<sup>3,4,5,6,7</sup>, Janita Bralten<sup>6,7</sup>, Derrek P. Hibar<sup>2,8</sup>, Penelope A. Lind<sup>4,9,10</sup>, Fabrizio Pizzagalli<sup>†</sup>, Christopher R. K. Ching<sup>2,10</sup>, Mary Agnes B. McMahon<sup>†</sup>, Natalia Shatkhina<sup>†</sup>, Leo C. P. Zsembik<sup>11</sup>, Sophia I. Thomopoulos<sup>†</sup>, Alyssa H. Zhu<sup>†</sup>, Lachlan T. Strike<sup>12</sup>, Ingrid Agartz<sup>13,15,16</sup>, Saud Alhusaini<sup>17,18</sup>, Marcio A. A. Almeida<sup>19</sup>, Dag Alnæs<sup>13,14</sup>, Inge K. Amlien<sup>20</sup>, Micael Andersson<sup>21,22</sup>, Tyler Ard<sup>23</sup>, Nicola J. Armstrong<sup>24</sup>, Allison Ashley-Koch<sup>25</sup>, Joshua R. Atkins<sup>26,27</sup>, Manon Bernard<sup>28</sup>, Rachel M. Brouwer<sup>29</sup>, Elizabeth E. L. Buimer<sup>29</sup>, Robin Bulow<sup>30</sup>, Christian Bürger<sup>31</sup>, Dara M. Cannon<sup>32</sup>, Mallar Chakravarty<sup>33,34</sup>, Qiang Chen<sup>35</sup>, Joshua W. Cheung<sup>36</sup>, Baptiste Couvy-Duchesne<sup>37,38,39</sup>, Anders M. Dale<sup>38,39</sup>, Shareefa Dalvie<sup>40</sup>, Tânia K. de Araujo<sup>41,42</sup>, Greig I. de Zubicaray<sup>43</sup>, Sonja M. C. de Zwart<sup>44</sup>, Anouk den Braber<sup>44,45</sup>, Nhat Trung Doan<sup>13,14</sup>, Katharina Dohm<sup>31</sup>, Stefan Ehrlich<sup>46</sup>, Hannah-Ruth Engelbrecht<sup>47</sup>, Susanne Erk<sup>48</sup>, Chun Chieh Fan<sup>49</sup>, Iryna O. Fedko<sup>44</sup>, Sonya F. Foley<sup>50</sup>, Judith M. Ford<sup>51</sup>, Masaki Fukunaga<sup>52</sup>, Melanie E. Garrett<sup>25</sup>, Tian Ge<sup>53,54</sup>, Sudheer Giddaluru<sup>55</sup>, Aaron L. Goldman<sup>35</sup>, Melissa J. Green<sup>56,57</sup>, Nynke A. Groenewold<sup>58</sup>, Dominik Grotegter<sup>31</sup>, Tiril P. Gurholt<sup>13,14,15</sup>, Boris A. Gutman<sup>58</sup>, Narelle K. Hansell<sup>12</sup>, Mathew A. Harris<sup>59,60</sup>, Marc B. Harrison<sup>60</sup>, Courtney C. Haswell<sup>61,62</sup>, Michael Hauser<sup>26</sup>, Stefan Herms<sup>63,64</sup>, Dirk J. Heslenfeld<sup>65</sup>, New Fei Ho<sup>67</sup>, David Hoehn<sup>68</sup>, Per Hoffmann<sup>63,64,69</sup>, Laurena Holleran<sup>70</sup>, Martine Hoogman<sup>6,7</sup>, Jouke-Jan Hottenga<sup>44</sup>, Masashi Ikeda<sup>71</sup>, Deborah Janowitz<sup>72</sup>, Iris E. Jansen<sup>73,74</sup>, Tianye Jia<sup>75,76,77</sup>, Christiane Jockwitz<sup>78,79</sup>, Ryota Kanai<sup>81,82,83</sup>, Sherif Karama<sup>33,84,85</sup>, Dalia Kaspraciute<sup>86,87</sup>, Tobias Kaufmann<sup>13,14</sup>, Sinead Kelly<sup>88,89</sup>, Masataka Kikuchi<sup>90</sup>, Marieke Klein<sup>5,7,29</sup>, Michael Knapp<sup>91</sup>, Anochen R. Knott<sup>92</sup>, Bernd Krämer<sup>93,94</sup>, Max Lam<sup>67,95</sup>, Thomas M. Lancaster<sup>50,96</sup>, Phil H. Lee<sup>53,97</sup>, Tristram A. Lett<sup>48</sup>, Lindsay B. Lewis<sup>85,98</sup>, Iscia Lopes-Cendes<sup>41,42</sup>, Michelle Luciano<sup>99,100</sup>, Fabio Macciardi<sup>101</sup>, Andre F. Marquand<sup>7,102</sup>, Samuel R. Mathias<sup>103,104</sup>, Tracy R. Melzer<sup>105,106,107</sup>, Yuri Milaneschi<sup>108</sup>, Nazanin Mirza-Schreiber<sup>68,109</sup>, Jose C. V. Moreira<sup>42,110</sup>, Thomas W. Mühlhies<sup>63,78,111</sup>, Bertram Müller-Miyahok<sup>68,112,113</sup>, Pablo Nait<sup>32</sup>, Soichiro Nakahara<sup>101,114</sup>, Kwangsik Nho<sup>115</sup>, Loes M. Olde Loohuis<sup>116</sup>, Dimitri Papadopoulos Orfanos<sup>117</sup>, John F. Pearson<sup>118,119</sup>, Toni L. Pitche<sup>105,106,107</sup>, Benno Pütz<sup>58</sup>, Yann Quidé<sup>56,57</sup>, Arjanibhargavi Ragothaman<sup>†</sup>, Faisal M. Rashid<sup>†</sup>, William R. Reay<sup>26,27</sup>, Ronny Redlich<sup>31</sup>, Céline S. Reinbold<sup>20,63,64</sup>, Jonathan Repple<sup>31</sup>, Geneviève Richard<sup>13,14,120,121</sup>, Brandalyn C. Riedel<sup>2115</sup>, Shannon L. Risacher<sup>115</sup>, Cristiane S. Rocha<sup>41,42</sup>, Nina R. Mota<sup>6,7,122</sup>, Lauren Salminen<sup>†</sup>, Arvin Saremi<sup>†</sup>, Andrew J. Saykin<sup>115,123</sup>, Fenja Schlag<sup>124</sup>, Lianne Schmaal<sup>125,126,127</sup>, Peter R. Schofield<sup>57,129</sup>, Rodrigo Secolin<sup>41,42</sup>, Chin Yang Shapland<sup>124</sup>, Li Shen<sup>130</sup>, Jean Shih<sup>28,131</sup>, Elena Shumskaya<sup>67,132</sup>, Ida E. Sønderby<sup>134,161</sup>, Emma Sprooten<sup>†</sup>, Katherine E. Tansey<sup>96</sup>, Alexander Teumer<sup>133</sup>, Anubalam Thalamuthu<sup>134</sup>, Diana Torresillas-Gutiérrez<sup>135,136</sup>, Jessica A. Tume<sup>137,138</sup>, Anne Uhlmann<sup>40,139</sup>, Costanza L. Vallega<sup>36</sup>, Dennis van der Meer<sup>140,141</sup>, Marjolien M. J. van Dongelaar<sup>142</sup>, Liza van Eijk<sup>131,12</sup>, Theo G. M. van Erp<sup>101</sup>, Neeltje E. M. van Haren<sup>29,143</sup>, Daan van Rooij<sup>130,12</sup>, Marie-José van Tol<sup>144</sup>, Jan H. Veldink<sup>145</sup>, Ellen Verhoeven<sup>124</sup>, Esther Walton<sup>137,146,147</sup>, Mingyuan Wang<sup>67</sup>, Yunpeng Wang<sup>13,14</sup>, Joanna M. Wardlaw<sup>59,100,148</sup>, Wei Wen<sup>134</sup>, Lars T. Westlye<sup>134,120</sup>, Christopher D. Whelan<sup>2,17</sup>, Stephanie H. Witt<sup>49</sup>, Katharina Wittfeld<sup>72,150</sup>, Christine Wolf<sup>151</sup>, Thomas Wolfers<sup>6</sup>, Jing Qin Wu<sup>26</sup>, Clarissa L. Yasuda<sup>42,152</sup>, Dario Zaremba<sup>31</sup>, Zuo Zhang<sup>153</sup>, Marcel P. Zwiers<sup>42,102,132</sup>, Eric Artiges<sup>154</sup>, Amelia A. Assareh<sup>134</sup>, Rosa Ayessa-Arriola<sup>136,155</sup>, Aysenil Belger<sup>61,156</sup>, Christine L. Brandt<sup>13,14</sup>, Gregory G. Brown<sup>157,158</sup>, Sven Cichon<sup>63,64,78</sup>, Joanne E. Curran<sup>19</sup>, Gareth E. Davies<sup>159</sup>, Franziska Degenhardt<sup>59</sup>, Michelle F. Dennis<sup>62</sup>, Bruno Dietsche<sup>160</sup>, Srđan Djurovic<sup>161,162</sup>, Colin P. Doherty<sup>163,164,165</sup>, Ryan Espiritu<sup>166</sup>, Daniel Garijo<sup>166</sup>, Yolanda Gil<sup>166</sup>, Penny A. Gowland<sup>167</sup>, Robert C. Green<sup>168,169,170</sup>, Alexander N. Hausler<sup>171,172</sup>, Walter Heindel<sup>173</sup>, Beng-Choon Heu<sup>174</sup>, Wolfgang U. Hoffmann<sup>133,150</sup>, Florian Holsboer<sup>68,175</sup>, Georg Homuth<sup>176</sup>, Norbert Hosten<sup>177</sup>, Clifford R. Jack Jr.<sup>178</sup>, MiHyun Jang<sup>166</sup>, Andreas Jansen<sup>160,179</sup>, Nathan A. Kimbra<sup>62,180</sup>, Knut Kolskar<sup>13,14,120,121</sup>, Sanne Koops<sup>29</sup>, Axel Krug<sup>160</sup>, Kelvin O. Lim<sup>181</sup>, Jurjen J. Luyck<sup>29,182,183</sup>, Daniel H. Mathalon<sup>184,185</sup>, Karen A. Mather<sup>57,134</sup>, Venkata S. Mattay<sup>35,186,187</sup>, Sarah Matthews<sup>146</sup>, Jaqueline Mayoral Van Son<sup>136,155</sup>, Sarah C. McEwen<sup>188,189</sup>, Ingrid Melle<sup>13,14</sup>, Derek W. Morris<sup>32</sup>, Bryon A. Mueller<sup>181</sup>, Matthias Nauck<sup>190,191</sup>, Jan E. Nordvik<sup>128</sup>, Markus M. Nöthen<sup>69</sup>, Daniel S. O'Leary<sup>174</sup>, Nils Opel<sup>31</sup>, Marie-Laure Paillière Martinot<sup>154,192</sup>, G. Bruce Pike<sup>193</sup>, Adrian Preda<sup>194</sup>, Erin B. Quinn<sup>153</sup>, Paul E. Rater<sup>195,196,197</sup>, Varun Ratnakar<sup>166</sup>, Simone Reppermund<sup>134,198</sup>, Vidar M. Steen<sup>162,199</sup>, Paul A. Tooney<sup>26,197</sup>, Fábio R. Torres<sup>41,42</sup>, Dick J. Veltman<sup>108</sup>, James T. Voyvodic<sup>61</sup>, Robert Whelan<sup>200</sup>, Tonya White<sup>43,201</sup>, Hidenaga Yamamoto<sup>202</sup>, Hieab H. H. Adams<sup>203,204,205</sup>, Joshua C. Bis<sup>206</sup>, Stephanie Debette<sup>207,208</sup>, Charles Decarli<sup>209</sup>, Myriam Fornage<sup>210</sup>, Vilmondur Gudnason<sup>211,212</sup>, Edith Hofer<sup>213</sup>, M. Arfan Ikram<sup>203</sup>, Lenore Launer<sup>215</sup>, W. T. Longstreth<sup>216</sup>, Oscar L. Lopez<sup>297</sup>, Bernard Mazoyer<sup>218</sup>, Thomas H. Mosley<sup>219</sup>, Gennady V. Roshchupkin<sup>203,204,217</sup>, Claudia L. Satizabal<sup>220,221,222</sup>, Reinhold Schmidt<sup>213</sup>, Sudha Seshadri<sup>220,222,223</sup>, Qiong Yang<sup>224</sup>, Alzheimer's Disease Neuroimaging Initiative<sup>†</sup>, CHARGE Consortium<sup>†</sup>, EPIGEN Consortium<sup>†</sup>, IMAGEN Consortium<sup>†</sup>, SYS Consortium<sup>†</sup>, Parkinson's Progression Markers Initiative<sup>†</sup>, Marina K. M. Alvin<sup>42,152</sup>, David Ames<sup>225,226</sup>, Tim J. Anderson<sup>105,106,107,227</sup>, Ole A. Andreassen<sup>13,14</sup>, Alejandro Arias-Vasquez<sup>6,7,122</sup>, Mark E. Bastin<sup>19,100</sup>, Bernhard T. Baune<sup>31,228,229</sup>, Jean C. Beckham<sup>180,230</sup>, John Blangero<sup>19</sup>, Dorret I. Boomsma<sup>44</sup>, Henry Brodaty<sup>134,231</sup>, Han G. Brunner<sup>6,7,232</sup>, Randy L. Buckner<sup>33,234,235</sup>, Jan K. Buitelaar<sup>7,102,236</sup>, Juan R. Bustillo<sup>237</sup>, Wiepke Cahn<sup>238</sup>, Murray J. Cairns<sup>239</sup>, Vince Calhoun<sup>240</sup>, Vaughan J. Carr<sup>56,57,241</sup>, Xavier Caseras<sup>36</sup>, Svenja Caspers<sup>78,80,242</sup>, Gianpiero L. Cavalleri<sup>243,244</sup>, Fernando Cendes<sup>82,92</sup>, Aiden Corvin<sup>245</sup>, Benedicto Crespo-Facorro<sup>136,156,246</sup>, John C. Dalrymple-Alford<sup>106,107,247</sup>, Udo Dannlowski<sup>31</sup>, Eco J. C. de Geus<sup>44</sup>, Ian J. Deary<sup>99,100</sup>, Norman Delanty<sup>17,165</sup>, Chantal Depondt<sup>248</sup>, Sylvane Desrivieres<sup>7,153</sup>, Gary Donohoe<sup>70</sup>, Thomas Espeseth<sup>13,120</sup>, Guillén Fernández<sup>7,102</sup>, Simon E. Fisher<sup>7,124</sup>, Herta Flor<sup>249</sup>, Andreas J. Forstner<sup>63,64,69,250,251</sup>, Clyde Francis<sup>7,124</sup>, Barbara Franke<sup>67,122</sup>, David C. Glahn<sup>104,252</sup>, Randy L. Gollub<sup>97,234,235</sup>, Hans J. Grabe<sup>72,150</sup>, Oliver Gruber<sup>93</sup>, Asta K. Häberg<sup>253,254</sup>, Ahmad R. Hariri<sup>92</sup>, Catharina A. Hartman<sup>255</sup>, Ryota Hashimoto<sup>202,256,257</sup>, Andreas Heinz<sup>258</sup>, Frans A. Henskens<sup>195,259</sup>, Manon H. J. Hillegers<sup>143,260</sup>, Pieter J. Hoekstra<sup>261</sup>, Avram J. Holmes<sup>234,262</sup>, L. Elliot Hong<sup>263</sup>, William D. Hopkins<sup>264</sup>, Hilleke E. Hulshoff Pol<sup>29</sup>, Terry L. Jernigan<sup>39,49,157,265</sup>, Erik G. Jönsson<sup>14,16</sup>, René S. Kahn<sup>29,266</sup>, Martin A. Kennedy<sup>119</sup>, Tilo T. J. Kircher<sup>162</sup>, Peter Kochunov<sup>263</sup>, John B. J. Kwok<sup>57,129,267</sup>, Stephanie Le Hellard<sup>62,199</sup>, Carmel M. Loughland<sup>195,268</sup>, Nicholas G. Martin<sup>37</sup>, Jean-Luc Martinot<sup>154</sup>, Colm McDonald<sup>32</sup>, Katie L. McMahon<sup>43,269</sup>, Andreas Meyer-Lindenberg<sup>270</sup>, Patricia T. Michie<sup>271</sup>, Rajendra A. Morey<sup>61,62</sup>, Bryan Mowry<sup>12,272</sup>, Lars Nyberg<sup>1,2,273</sup>, Jaap Oosterlaan<sup>274,275,276</sup>, Roel A. Ophoff<sup>116</sup>, Christos Pantelis<sup>228,229,277</sup>, Thomas Paus<sup>278,279,280</sup>, Zdenka Pausova<sup>281</sup>, Brenda W. J. H. Penninx<sup>108</sup>, Tinca J. C. Polderman<sup>71</sup>, Danielle Posthuma<sup>3,282</sup>, Marcela Rietsche<sup>149</sup>, Joshua L. Roffman<sup>234</sup>, Laura M. Rowland<sup>53</sup>, Perimder S. Sachdev<sup>134,283</sup>, Philipp G. Samann<sup>68</sup>, Ulrich Schall<sup>27</sup>, Gunter Schumann<sup>7,71,153,284,285</sup>, Rodney J. Scott<sup>26,286</sup>, Kang Sim<sup>287</sup>, Sanjay M. Sisodia<sup>86,288</sup>, Jordan W. Smoller<sup>83,234,289</sup>, Iris E. Sommer<sup>44,260,261,290</sup>, Beate St Pourcain<sup>124,146</sup>, Dan J. Stein<sup>291,292</sup>, Arthur W. Toga<sup>23</sup>, Julian N. Trollor<sup>134,198</sup>, Nic J. A. Van der Wee<sup>293</sup>, Dennis van 't Ent<sup>44</sup>, Henry Völzke<sup>133</sup>, Henrik Walter<sup>48</sup>, Bernd Weber<sup>171,172</sup>, Daniel R. Weinberger<sup>35,294</sup>, Margaret J. Wright<sup>12,295</sup>, Juan Zhou<sup>296</sup>, Jason L. Stein<sup>11,5\*</sup>, Paul M. Thompson<sup>5\*</sup>, Sarah E. Medland<sup>4,3,9,5\*</sup>, Enhancing Neuroimaging Genetics through Meta-Analysis Consortium (ENIGMA)—Genetics working group<sup>†</sup>

<sup>1</sup>Psychiatric Genetics, QIMR Berghofer Medical Research Institute, Brisbane, QLD, Australia. <sup>2</sup>Imaging Genetics Center, Mark and Mary Stevens Neuroimaging and Informatics Institute, Keck School of Medicine of USC, University of Southern California, Los Angeles, CA, USA. <sup>3</sup>School of Psychology, University of Queensland, Brisbane, QLD, Australia. <sup>4</sup>School of Biomedical Sciences, Queensland University of Technology, Brisbane, QLD, Australia. <sup>5</sup>Faculty of Psychology, University of Murcia, Murcia, Spain. <sup>6</sup>Department of Human Genetics, Radboud University Medical Center, Nijmegen, Netherlands. <sup>7</sup>Donders Institute for Brain, Cognition and Behaviour, Radboud University, Nijmegen, Netherlands. <sup>8</sup>Personalized Healthcare, Genentech, Inc., South San Francisco, CA, USA. <sup>9</sup>Faculty of Medicine, University of Queensland, Brisbane, QLD, Australia. <sup>10</sup>Graduate

Interdepartmental Program in Neuroscience, University of California Los Angeles, Los Angeles, CA, USA. <sup>11</sup>Department of Genetics and UNC Neuroscience Center, University of North Carolina at Chapel Hill, Chapel Hill, NC, USA. <sup>12</sup>Queensland Brain Institute, University of Queensland, St Lucia, QLD, Australia. <sup>13</sup>NORMENT - K.G. Jebsen Centre for Psychosis Research, Division of Mental Health and Addiction, Oslo University Hospital, Oslo, Norway. <sup>14</sup>NORMENT - K.G. Jebsen Centre for Psychosis Research, Institute of Clinical Medicine, University of Oslo, Oslo, Norway. <sup>15</sup>Department of Psychiatric Research, Diakonhjemmet Hospital, Oslo, Norway. <sup>16</sup>Centre for Psychiatric Research, Department of Clinical Neuroscience, Karolinska Institutet, Stockholm, Sweden. <sup>17</sup>Department of Molecular and Cellular Therapeutics, Royal College of Surgeons in Ireland, Dublin, Ireland. <sup>18</sup>Neurology Department, Yale School of Medicine, New Haven, CT, USA. <sup>19</sup>Department of Human Genetics and South Texas Diabetes and Obesity Institute, University of Texas Rio Grande Valley School of Medicine, Brownsville, TX, USA. <sup>20</sup>Centre for Lifespan Changes in Brain and Cognition, Department of Psychology, University of Oslo, Oslo, Norway. <sup>21</sup>Department of Integrative Medical Biology, Umeå University, Umeå, Sweden. <sup>22</sup>Umeå Center for Functional Brain Imaging, Umeå University, Umeå, Sweden. <sup>23</sup>Laboratory of Neuro Imaging, Mark and Mary Stevens Neuroimaging and Informatics Institute, Keck School of Medicine of the University of Southern California, Los Angeles, CA, USA. <sup>24</sup>Mathematics and Statistics, Murdoch University, Murdoch, WA, Australia. <sup>25</sup>Duke University Physiology Institute, Duke University Medical Center, Durham, NC, USA. <sup>26</sup>School of Biomedical Sciences and Pharmacy, University of Newcastle, Callaghan, NSW, Australia. <sup>27</sup>Priority Centre for Brain and Mental Health Research, University of Newcastle, Callaghan, NSW, Australia. <sup>28</sup>The Hospital for Sick Children, University of Toronto, Toronto, ON, Canada. <sup>29</sup>Department of Psychiatry, University Medical Center Utrecht Brain Center, University Medical Center Utrecht, Utrecht University, Utrecht, Netherlands. <sup>30</sup>Institute for Radiology and Neuroradiology, University Medicine Greifswald, Greifswald, Germany. <sup>31</sup>Department of Psychiatry, University of Münster, Münster, Germany. <sup>32</sup>Centre for Neuroimaging and Cognitive Genomics, National University of Ireland Galway, Galway, Ireland. <sup>33</sup>Douglas Mental Health University Institute, McGill University, Montreal, QC, Canada. <sup>34</sup>Departments of Psychiatry and Biological and Biomedical Engineering, McGill University, Montreal, QC, Canada. <sup>35</sup>Lieber Institute for Brain Development, Baltimore, MD, USA. <sup>36</sup>Institute for Molecular Bioscience, University of Queensland, Brisbane, QLD, Australia. <sup>37</sup>Genetic Epidemiology, QIMR Berghofer Medical Research Institute, Brisbane, QLD, Australia. <sup>38</sup>Department of Neurosciences, University of California, San Diego, La Jolla, CA, USA. <sup>39</sup>Department of Radiology, University of California San Diego, San Diego, CA, USA. <sup>40</sup>Department of Psychiatry and Mental Health, University of Cape Town, Cape Town, South Africa. <sup>41</sup>Department of Medical Genetics and Genomic Medicine, School of Medical Sciences, University of Campinas - UNICAMP, Campinas, Brazil. <sup>42</sup>BRAIN - Brazilian Institute of Neuroscience and Neurotechnology, Campinas, Brazil. <sup>43</sup>Faculty of Health, Institute of Health and Biomedical Innovation, Queensland University of Technology, Brisbane, QLD, Australia. <sup>44</sup>Department of Biological Psychology, Vrije Universiteit Amsterdam, Amsterdam, Netherlands. <sup>45</sup>Alzheimer Center Amsterdam, Department of Neurology, Amsterdam Neuroscience, Vrije Universiteit Amsterdam, Amsterdam UMC, Amsterdam, Netherlands. <sup>46</sup>Division of Psychological and Social Medicine and Developmental Neurosciences, Faculty of Medicine, Technische Universität Dresden, Dresden, Germany. <sup>47</sup>Division of Human Genetics, Institute of Infectious Disease and Molecular Medicine, University of Cape Town, Cape Town, South Africa. <sup>48</sup>Division of Mind and Brain Research, Department of Psychiatry and Psychotherapy, Campus Charité Mitte, Charité - Universitätsmedizin Berlin corporate member of Freie Universität Berlin, Humboldt-Universität zu Berlin, and Berlin Institute of Health, Berlin, Germany. <sup>49</sup>Department of Cognitive Science, University of California San Diego, San Diego, CA, USA. <sup>50</sup>Cardiff University Brain Research Imaging Center, Cardiff University, Cardiff, UK. <sup>51</sup>San Francisco Veterans Administration Medical Center, San Francisco, CA, USA. <sup>52</sup>Division of Cerebral Integration, National Institute for Physiological Sciences, Okazaki, Japan. <sup>53</sup>Psychiatric and Neurodevelopmental Genetics Unit, Center for Genomic Medicine, Massachusetts General Hospital, Boston, MA, USA. <sup>54</sup>Athinoula A. Martinos Center for Biomedical Imaging, Massachusetts General Hospital, Boston, MA, USA. <sup>55</sup>NORMENT - K.G. Jebsen Centre for Psychosis Research, Department of Clinical Science, University of Bergen, Bergen, Norway. <sup>56</sup>School of Psychiatry, University of New South Wales, Sydney, NSW, Australia. <sup>57</sup>Neuroscience Research Australia, Sydney, NSW, Australia. <sup>58</sup>Department of Biomedical Engineering, Illinois Institute of

- Technology, Chicago, IL, USA. <sup>59</sup>Centre for Clinical Brain Sciences and Edinburgh Imaging, University of Edinburgh, Edinburgh, UK. <sup>60</sup>Division of Psychiatry, University of Edinburgh, Edinburgh, UK. <sup>61</sup>Duke UNC Brain Imaging and Analysis Center, Duke University Medical Center, Durham, NC, USA. <sup>62</sup>Mental Illness Research Education and Clinical Center for Post Deployment Mental Health, Durham VA Medical Center, Durham, NC, USA. <sup>63</sup>Department of Biomedicine, University of Basel, Basel, Switzerland. <sup>64</sup>Institute of Medical Genetics and Pathology, University Hospital Basel, Basel, Switzerland. <sup>65</sup>Department of Genomics, Life & Brain Research Center, University of Bonn, Bonn, Germany. <sup>66</sup>Department of Cognitive and Clinical Neuropsychology, Vrije Universiteit Amsterdam, Amsterdam, Netherlands. <sup>67</sup>Research Division, Institute of Mental Health, Singapore, Singapore. <sup>68</sup>Max Planck Institute of Psychiatry, Munich, Germany. <sup>69</sup>Institute of Human Genetics, University of Bonn, School of Medicine and University Hospital Bonn, Bonn, Germany. <sup>70</sup>Centre for Neuroimaging and Cognitive Genomics, School of Psychology, National University of Ireland Galway, Galway, Ireland. <sup>71</sup>Department of Psychiatry, Fujita Health University School of Medicine, Toyoake, Japan. <sup>72</sup>Department of Psychiatry and Psychotherapy, University Medicine Greifswald, Greifswald, Germany. <sup>73</sup>Complex Trait Genetics, Center for Neurogenetics and Cognitive Research, Vrije Universiteit Amsterdam, Amsterdam, Netherlands. <sup>74</sup>Department of Neurology, Alzheimer Center, Amsterdam Neuroscience, Vrije Universiteit Medical Center, Vrije Universiteit Amsterdam, Amsterdam, Netherlands. <sup>75</sup>Institute of Science and Technology for Brain-Inspired Intelligence, Fudan University, Shanghai, China. <sup>76</sup>Key Laboratory of Computational Neuroscience and Brain-Inspired Intelligence (Fudan University), Ministry of Education, Shanghai, China. <sup>77</sup>Centre for Population Neuroscience and Precision Medicine (PONS), Institute of Psychiatry, Psychology and Neuroscience, King's College London, London, UK. <sup>78</sup>Institute of Neuroscience and Medicine (INM-1), Research Centre Jülich, Jülich, Germany. <sup>79</sup>Department of Psychiatry, Psychotherapy and Psychosomatics, Medical Faculty, RWTH Aachen University, Aachen, Germany. <sup>80</sup>JARA-BRAIN, Jülich-Aachen Research Alliance, Jülich, Germany. <sup>81</sup>Department of Neuroinformatics, Araya, Inc., Tokyo, Japan. <sup>82</sup>Sackler Centre for Consciousness Science, School of Psychology, University of Sussex, Falmer, UK. <sup>83</sup>Earth-Life Science Institute, Tokyo Institute of Technology, Tokyo, Japan. <sup>84</sup>Department of Psychiatry, McGill University, Montreal, QC, Canada. <sup>85</sup>McConnell Brain Imaging Center, Montreal Neurological Institute, Montreal, QC, Canada. <sup>86</sup>Department of Clinical and Experimental Epilepsy, UCL Queen Square Institute of Neurology, London, UK. <sup>87</sup>Genomics England, Queen Mary University of London, London, UK. <sup>88</sup>Public Psychiatry Division, Massachusetts Mental Health Center, Beth Israel Deaconess Medical Center, Harvard Medical School, Boston, MA, USA. <sup>89</sup>Psychiatry Neuroimaging Laboratory, Department of Psychiatry, Brigham and Women's Hospital, Harvard Medical School, Boston, MA, USA. <sup>90</sup>Department of Genome Informatics, Graduate School of Medicine, Osaka University, Suita, Japan. <sup>91</sup>Department of Medical Biometry, Informatics and Epidemiology, University Hospital Bonn, Bonn, Germany. <sup>92</sup>Department of Psychology and Neuroscience, Duke University, Durham, NC, USA. <sup>93</sup>Section for Experimental Psychopathology and Neuroimaging, Department of General Psychiatry, Heidelberg University Hospital, Heidelberg, Germany. <sup>94</sup>Centre for Translational Research in Systems Neuroscience and Psychiatry, Department of Psychiatry and Psychotherapy, University Medical Center Göttingen, Göttingen, Germany. <sup>95</sup>Human Genetics, Genome Institute of Singapore, Singapore, Singapore. <sup>96</sup>MRC Centre for Neuropsychiatric Genetics and Genomics, Cardiff University, Cardiff, UK. <sup>97</sup>Department of Psychiatry, Harvard Medical School, Boston, MA, USA. <sup>98</sup>McGill Centre for Integrative Neuroscience, McGill University, Montreal, QC, Canada. <sup>99</sup>Department of Psychology, University of Edinburgh, Edinburgh, UK. <sup>100</sup>Centre for Cognitive Ageing and Cognitive Epidemiology, University of Edinburgh, Edinburgh, UK. <sup>101</sup>Department of Psychiatry and Human Behavior, School of Medicine University of California, Irvine, Irvine, CA, USA. <sup>102</sup>Department of Cognitive Neuroscience, Radboud university medical center, Nijmegen, Netherlands. <sup>103</sup>Department of Psychiatry, Yale University School of Medicine, New Haven, CT, USA. <sup>104</sup>Olin Neuropsychiatric Research Center, Institute of Living, Hartford Hospital, Hartford, CT, USA. <sup>105</sup>Department of Medicine, University of Otago, Christchurch, Christchurch, New Zealand. <sup>106</sup>New Zealand Brain Research Institute, Christchurch, New Zealand. <sup>107</sup>Brain Research New Zealand - Rangahau Roro Aotearoa, Christchurch, New Zealand. <sup>108</sup>Department of Psychiatry, Amsterdam Public Health and Amsterdam Neuroscience, Amsterdam UMC/Vrije Universiteit and GGZ inGeest, Amsterdam, Netherlands. <sup>109</sup>Institute of Neurogenetics, Helmholtz Zentrum München, German Research Centre for Environmental Health, Neuherberg, Germany. <sup>110</sup>IC - Institute of Computing, Campinas, Brazil. <sup>111</sup>Cécile and Oskar Vogt Institute of Brain Research, Medical Faculty, Heinrich Heine University, Düsseldorf, Germany. <sup>112</sup>Munich Cluster for Systems Neurology (SyNergy), Munich, Germany. <sup>113</sup>Institute of Translational Medicine, Liverpool, UK. <sup>114</sup>Drug Discovery Research, Astellas Pharmaceuticals, <sup>21</sup> Myukigaoaka, Tsukuba, Ibaraki <sup>305\_8585</sup>, Japan. <sup>115</sup>Department of Radiology and Imaging Sciences, Indiana University School of Medicine, Indianapolis, IN, USA. <sup>116</sup>Center for Neurobehavioral Genetics, University of California Los Angeles, Los Angeles, CA, USA. <sup>117</sup>NeuroSpin, CEA, Université Paris-Saclay, Gif-sur-Yvette, France. <sup>118</sup>Biostatistics and Computational Biology Unit, University of Otago, Christchurch, Christchurch, New Zealand. <sup>119</sup>Department of Pathology and Biomedical Science, University of Otago, Christchurch, Christchurch, New Zealand. <sup>120</sup>Department of Psychology, University of Oslo, Oslo, Norway. <sup>121</sup>Sunnaas Rehabilitation Hospital HT, Nesodden, Norway. <sup>122</sup>Department of Psychiatry, Radboud university medical center, Nijmegen, Netherlands. <sup>123</sup>Department of Medical and Molecular Genetics, Indiana University School of Medicine, Indianapolis, IN, USA. <sup>124</sup>Language and Genetics Department, Max Planck Institute for Psycholinguistics, Nijmegen, Netherlands. <sup>125</sup>Orygen, The National Centre of Excellence for Youth Mental Health, Melbourne, VIC, Australia. <sup>126</sup>The Centre for Youth Mental Health, University of Melbourne, Melbourne, VIC, Australia. <sup>127</sup>Department of Psychiatry, Vrije Universiteit University Medical Center, Vrije Universiteit Amsterdam, Amsterdam, Netherlands. <sup>128</sup>CatoCenteret Rehabilitation Center, Nesodden, Norway. <sup>129</sup>School of Medical Sciences, University of New South Wales, Sydney, NSW, Australia. <sup>130</sup>Department of Biostatistics, Epidemiology and Informatics, University of Pennsylvania, Philadelphia, PA, USA. <sup>131</sup>Population Neuroscience & Developmental Neuroimaging, Bloover Research Institute, University of Toronto, East York, ON, Canada. <sup>132</sup>Donders Centre for Cognitive Neuroimaging, Radboud University, Nijmegen, Netherlands. <sup>133</sup>Institute for Community Medicine, University Medicine Greifswald, Greifswald, Germany. <sup>134</sup>Centre for Healthy Brain Ageing, University of New South Wales, Sydney, NSW, Australia. <sup>135</sup>Neuroimaging Unit, Technological Facilities, Valdecilla Biomedical Research Institute IDIVAL, Santander, Spain. <sup>136</sup>Centro Investigación Biomedica en Red Salud Mental, Santander, Spain. <sup>137</sup>Department of Psychology, Georgia State University, Atlanta, GA, USA. <sup>138</sup>Mind Research Network, Albuquerque, NM, USA. <sup>139</sup>Department of Psychiatry, University of Vermont, Burlington, VT, USA. <sup>140</sup>NORMENT, Division of Mental Health and Addiction, Oslo University Hospital and Institute of Clinical Medicine, University of Oslo, Oslo, Norway. <sup>141</sup>School of Mental Health and Neuroscience, Faculty of Health, Medicine and Life Sciences, Maastricht University, Maastricht, Netherlands. <sup>142</sup>Max Planck Institute for Psycholinguistics, Nijmegen, Netherlands. <sup>143</sup>Department of Child and Adolescent Psychiatry/Psychology, Erasmus Medical Center-Sophia Children's Hospital, Rotterdam, Netherlands. <sup>144</sup>Cognitive Neuroscience Center, Department of Biomedical Sciences of Cells and Systems, University Medical Center Groningen, University of Groningen, Groningen, Netherlands. <sup>145</sup>Department of Neurology, Brain Center Rudolf Magnus, University Medical Center Utrecht, Utrecht University, Utrecht, Netherlands. <sup>146</sup>MRC Integrative Epidemiology Unit, Department of Population Health Sciences, Bristol Medical School, Bristol, UK. <sup>147</sup>Department of Psychology, University of Bath, Bath, UK. <sup>148</sup>UK Dementia Research Institute, The University of Edinburgh, Edinburgh, UK. <sup>149</sup>Department of Genetic Epidemiology in Psychiatry, Central Institute of Mental Health, Medical Faculty Mannheim, Heidelberg University, Mannheim, Germany. <sup>150</sup>German Center for Neurodegenerative Diseases Rostock/Greifswald, Greifswald, Germany. <sup>151</sup>Department of Psychiatry, Psychosomatics and Psychotherapy, University of Würzburg, Würzburg, Germany. <sup>152</sup>Department of Neurology, FCM, UNICAMP, Campinas, Brazil. <sup>153</sup>Social, Genetic and Developmental Psychiatry Centre, Institute of Psychiatry, Psychology & Neuroscience, King's College London, London, UK. <sup>154</sup>INSERM ERL Developmental Trajectories and Psychiatry; Université Paris-Saclay, Ecole Normale Supérieure Paris-Saclay, Université de Paris, and CNRS 9010, Centre Borelli, Gif-sur-Yvette, France. <sup>155</sup>Department of Psychiatry, University Hospital Marqués de Valdecilla, School of Medicine, University of Cantabria-IDIVAL, Santander, Spain. <sup>156</sup>Department of Psychiatry and Frank Porter Graham Child Development Institute, University of North Carolina at Chapel Hill, Chapel Hill, NC, USA. <sup>157</sup>Department of Psychiatry, University of California San Diego, San Diego, CA, USA. <sup>158</sup>VA San Diego Healthcare System, San Diego, CA, USA. <sup>159</sup>Avera Institute for Human Genetics, Sioux Falls, SD, USA. <sup>160</sup>Department of Psychiatry and Psychotherapy, Philipps-University Marburg, Marburg, Germany. <sup>161</sup>Department of Medical Genetics, Oslo University Hospital, Oslo, Norway. <sup>162</sup>NORMENT, Department of Clinical Science, University of Bergen, Bergen, Norway. <sup>163</sup>Department of Neurology, St James's Hospital, Dublin, Ireland. <sup>164</sup>Academic Unit of Neurology, TBSI, Dublin, Ireland. <sup>165</sup>Future Neuro, Royal College of Surgeons in Ireland, Dublin, Ireland. <sup>166</sup>Information Sciences Institute, University of Southern California, Los Angeles, CA, USA. <sup>167</sup>Sir Peter Mansfield Imaging Centre, University of Nottingham, Nottingham, UK. <sup>168</sup>Brigham and Women's Hospital, Boston, MA, USA. <sup>169</sup>The Broad Institute, Boston, MA, USA. <sup>170</sup>Harvard Medical School, Boston, MA, USA. <sup>171</sup>Center for Economics and Neuroscience, University of Bonn, Bonn, Germany. <sup>172</sup>Institute of Experimental Epileptology and Cognition Research, University Hospital Bonn, Germany. <sup>173</sup>Department of Clinical Radiology, University of Münster, Münster, Germany. <sup>174</sup>Department of Psychiatry, University of Iowa College of Medicine, Iowa City, IA, USA. <sup>175</sup>HMNC Holding GmbH, Munich, Germany. <sup>176</sup>University Medicine Greifswald, Interfaculty Institute for Genetics and Functional Genomics, Department of Functional Genomics, Greifswald, Germany. <sup>177</sup>Institute of Diagnostic Radiology and Neuroradiology, University Medicine Greifswald, Greifswald, Germany. <sup>178</sup>Department of Radiology, Mayo Clinic, Rochester, MN, USA. <sup>179</sup>Core-Unit Brainimaging, Faculty of Medicine, University of Marburg, Marburg, Germany. <sup>180</sup>Department of Psychiatry and Behavioral Sciences, Duke University School of Medicine, Durham, NC, USA. <sup>181</sup>Department of Psychiatry, University of Minnesota, Minneapolis, MN, USA. <sup>182</sup>Department of Translational Neuroscience, UMC Utrecht Brain Center, University Medical Center Utrecht, Utrecht University, Utrecht, Netherlands. <sup>183</sup>GGNet Mental Health, Apeldoorn, Netherlands. <sup>184</sup>Department of Psychiatry and Weill Institute for Neurosciences, University of California San Francisco, San Francisco, CA, USA. <sup>185</sup>Mental Health Service 116d, Veterans Affairs San Francisco Healthcare System, San Francisco, CA, USA. <sup>186</sup>Department of Neurology, Johns Hopkins University, Baltimore, MD, USA. <sup>187</sup>Department of Radiology, Johns Hopkins University, Baltimore, MD, USA. <sup>188</sup>Pacific Brain Health Center, Santa Monica, CA, USA. <sup>189</sup>John Wayne Cancer Institute, Santa Monica, CA, USA. <sup>190</sup>Institute of Clinical Chemistry and Laboratory Medicine, University Medicine Greifswald, Greifswald, Germany. <sup>191</sup>German Centre for Cardiovascular Research (DZHK), Partner Site Greifswald, Greifswald, Germany. <sup>192</sup>APHP.Sorbonne Université, Child and Adolescent Psychiatry Department, Pitié Salpêtrière Hospital, Paris, France. <sup>193</sup>Radiology and Clinical Neurosciences, Hotchkiss Brain Institute, University of Calgary, Calgary, AB, Canada. <sup>194</sup>School of Medicine, University of California Irvine, Irvine, CA, USA. <sup>195</sup>School of Medicine and Public Health, University of Newcastle, Callaghan, NSW, Australia. <sup>196</sup>Priority Centre for Stroke and Brain Injury, University of Newcastle, Callaghan, NSW, Australia. <sup>197</sup>Hunter Medical Research Institute, Newcastle, NSW, Australia. <sup>198</sup>Department of Developmental Disability Neuropsychiatry, University of New South Wales, Sydney, NSW, Australia. <sup>199</sup>Dr. Einar Martens Research Group for Biological Psychiatry, Center for Medical Genetics and Molecular Medicine, Haukeland University Hospital, Bergen, Norway. <sup>200</sup>School of Psychology, Trinity College Dublin, Dublin, Ireland. <sup>201</sup>Department of Radiology, Erasmus University Medical Center, Rotterdam, Netherlands. <sup>202</sup>Department of Psychiatry, Osaka University Graduate School of Medicine, Suita, Japan. <sup>203</sup>Department of Epidemiology, Erasmus MC Medical Center, Rotterdam, Netherlands. <sup>204</sup>Department of Radiology and Nuclear Medicine, Erasmus MC Medical Center, Rotterdam, Netherlands. <sup>205</sup>Department of Clinical Genetics, Erasmus MC Medical Center, Rotterdam, Netherlands. <sup>206</sup>Cardiovascular Health Research Unit, Department of Medicine, University of Washington, Seattle, WA, USA. <sup>207</sup>INSERM, Bordeaux Population Health Research Center, team VINTAGE, UMR 1219, University of Bordeaux, Bordeaux, France. <sup>208</sup>Department of Neurology, CHU de Bordeaux, Bordeaux, France. <sup>209</sup>Department of Neurology, University of California, Davis, Sacramento, CA, USA. <sup>210</sup>Institute of Molecular Medicine, University of Texas Health Science Center at Houston, Houston, TX, USA. <sup>211</sup>Icelandic Heart Association, Kopavogur, Iceland. <sup>212</sup>Faculty of Medicine, University of Iceland, Reykjavik, Iceland. <sup>213</sup>Clinical Division of Neurogeriatrics, Department of Neurology, Medical University of Graz, Graz, Austria. <sup>214</sup>Institute for Medical Informatics, Statistics and Documentation, Medical University of Graz, Graz, Austria. <sup>215</sup>Laboratory of Epidemiology and Population Sciences, Intramural Research Program, National Institute on Aging, Bethesda, MD, USA. <sup>216</sup>Departments of Neurology and Epidemiology, University of Washington, Seattle, WA, USA. <sup>217</sup>Medical Informatics, Erasmus MC Medical Center, Rotterdam, Netherlands. <sup>218</sup>Neurodegenerative Diseases Institute UMR 5293, CNRS, CEA, University of Bordeaux, Bordeaux, France. <sup>219</sup>MIND Center, University of Mississippi Medical Center, Jackson, MS, USA.



- <sup>220</sup>Glenn Biggs Institute for Alzheimer's and Neurodegenerative Diseases, University of Texas Health Sciences Center, San Antonio, TX, USA. <sup>221</sup>Department of Epidemiology & Biostatistics, University of Texas Health Sciences Center, San Antonio, TX, USA. <sup>222</sup>Department of Neurology, Boston University School of Medicine, Boston, MA, USA. <sup>223</sup>Framingham Heart Study and Department of Neurology, Boston University School of Medicine, Boston, MA, USA. <sup>224</sup>Department of Biostatistics, Boston University School of Public Health, Boston, MA, USA. <sup>225</sup>Academic Unit for Psychiatry of Old Age, University of Melbourne, Melbourne, VIC, Australia. <sup>226</sup>National Ageing Research Institute, Melbourne, VIC, Australia. <sup>227</sup>Department of Neurology, Canterbury District Health Board, Christchurch, New Zealand. <sup>228</sup>Department of Psychiatry, Melbourne Medical School, University of Melbourne, Melbourne, VIC, Australia. <sup>229</sup>Florey Institute of Neuroscience and Mental Health, University of Melbourne, Parkville, VIC, Australia. <sup>230</sup>VA Mid-Atlantic Mental Illness Research Education and Clinical Center for Post Deployment Mental Health, Durham, VA Healthcare System, Durham, NC, USA. <sup>231</sup>Dementia Centre for Research Collaboration, University of New South Wales, Sydney, NSW, Australia. <sup>232</sup>Department of Clinical Genetics and School for Oncology and Developmental Biology (GROW), Maastricht University Medical Center, Maastricht, Netherlands. <sup>233</sup>Department of Psychology and Center for Brain Science, Harvard University, Boston, MA, USA. <sup>234</sup>Department of Psychiatry, Massachusetts General Hospital, Boston, MA, USA. <sup>235</sup>Department of Radiology, Massachusetts General Hospital, Boston, MA, USA. <sup>236</sup>Karakter Child and Adolescent Psychiatry University Center, Nijmegen, Netherlands. <sup>237</sup>Department of Psychiatry, University of New Mexico, Albuquerque, NM, USA. <sup>238</sup>Department of Psychiatry, University Medical Center Utrecht, Utrecht University, Utrecht, Netherlands. <sup>239</sup>Schizophrenia Research Institute, Randwick, NSW, Australia. <sup>240</sup>Tri-institutional Center for Translational Research in Neuroimaging and Data Science (TReNDS), Georgia State University, Georgia Institute of Technology, Emory University, Atlanta, GA, USA. <sup>241</sup>Department of Psychiatry, Monash University, Clayton, VIC, Australia. <sup>242</sup>Institute for Anatomy I, Medical Faculty, Heinrich-Heine University, Düsseldorf, Germany. <sup>243</sup>Molecular and Cellular Therapeutics, Royal College of Surgeons in Ireland, Dublin, Ireland. <sup>244</sup>The SFI FutureNeuro Research Centre, Dublin, Ireland. <sup>245</sup>Department of Psychiatry, Trinity College Dublin, Dublin, Ireland. <sup>246</sup>Hospital Universitario Virgen Del Rocío, IBI, Universidad De Sevilla, Sevilla, Spain. <sup>247</sup>School of Psychology, Speech and Hearing, University of Canterbury, Christchurch, New Zealand. <sup>248</sup>Department of Neurology, Hôpital Erasme, Université Libre de Bruxelles, Brussels, Belgium. <sup>249</sup>Institute of Cognitive and Clinical Neuroscience, Central Institute of Mental Health, Medical Faculty Mannheim, Heidelberg University, Mannheim, Germany. <sup>250</sup>Department of Psychiatry (UPK), University of Basel, Basel, Switzerland. <sup>251</sup>Centre for Human Genetics, University of Marburg, Marburg, Germany. <sup>252</sup>Tommy Fuss Center for Neuropsychiatric Disease Research, Boston Children's Hospital and Department of Psychiatry, Harvard Medical School, Boston, MA, USA. <sup>253</sup>Department of Neuroscience, Norwegian University of Science and Technology, Trondheim, Norway. <sup>254</sup>Department of Radiology and Nuclear Medicine, St. Olavs University Hospital, Trondheim, Norway. <sup>255</sup>University of Groningen, University Medical Center Groningen, Department of Psychiatry, Groningen, Netherlands. <sup>256</sup>Molecular Research Center for Children's Mental Development, United Graduate School of Child Development, Osaka University, Suita, Japan. <sup>257</sup>Department of Pathology of Mental Diseases, National Institute of Mental Health, National Center of Neurology and Psychiatry, Tokyo, Japan. <sup>258</sup>Department of Psychiatry and Psychotherapy, Charité Campus Mitte, Charité - Universitätsmedizin Berlin, Berlin, Germany. <sup>259</sup>Health Behaviour Research Group, University of Newcastle, Callaghan, NSW, Australia. <sup>260</sup>Brain Center Rudolf Magnus, University Medical Center Utrecht, Utrecht University, Utrecht, Netherlands. <sup>261</sup>Department of Psychiatry, University Medical Center Groningen, University of Groningen, Groningen, Netherlands. <sup>262</sup>Department of Psychology, Yale University, New Haven, CT, USA. <sup>263</sup>Maryland Psychiatry Research Center, Department of Psychiatry, University of Maryland School of Medicine, Baltimore, MD, USA. <sup>264</sup>Department of Comparative Medicine, The University of Texas MD Anderson Cancer Center, Bastrop, TX, USA. <sup>265</sup>Center for Human Development, University of California San Diego, La Jolla, CA, USA. <sup>266</sup>Department of Psychiatry, Icahn School of Medicine at Mount Sinai, New York, NY, USA. <sup>267</sup>Neurogenetics and Epigenetics, Brain and Mind Centre, The University of Sydney, Sydney, NSW, Australia. <sup>268</sup>Hunter New England Mental Health Service, Newcastle, NSW, Australia. <sup>269</sup>Herston Imaging Research Facility, School of Clinical Sciences, Queensland University of Technology, Brisbane, QLD, Australia. <sup>270</sup>Department of Psychiatry and Psychotherapy, Central Institute of Mental Health, Medical Faculty Mannheim, Heidelberg University, Mannheim, Germany. <sup>271</sup>School of Psychology, University of Newcastle, Callaghan, NSW, Australia. <sup>272</sup>Queensland Centre for Mental Health Research, University of Queensland, Brisbane, QLD, Australia. <sup>273</sup>Department of Radiation Sciences, Umeå University, Umeå, Sweden. <sup>274</sup>Emma Children's Hospital Academic Medical Center, Amsterdam, Netherlands. <sup>275</sup>Department of Pediatrics, Vrije Universiteit Medical Center, Vrije Universiteit Amsterdam, Amsterdam, Netherlands. <sup>276</sup>Clinical Neuropsychology section, Vrije Universiteit Amsterdam, Amsterdam, Netherlands. <sup>277</sup>NorthWestern Mental Health, Sunshine Hospital, St Albans, VIC, Australia. <sup>278</sup>Bloorview Research Institute, University of Toronto, Toronto, ON, Canada. <sup>279</sup>Departments of Psychology and Psychiatry, University of Toronto, Toronto, ON, Canada. <sup>280</sup>Centre for Developing Brain, Child Mind Institute, New York, NY, USA. <sup>281</sup>Department of Physiology, University of Toronto, Toronto, ON, Canada. <sup>282</sup>Department of Clinical Genetics, Vrije Universiteit Medical Centre, Vrije Universiteit Amsterdam, Amsterdam, Netherlands. <sup>283</sup>Neuropsychiatric Institute, The Prince of Wales Hospital, Sydney, NSW, Australia. <sup>284</sup>PONS Research Group, Department of Psychiatry and Psychotherapie, Charité Campus Mitte, Humboldt University Berlin, Berlin, Germany. <sup>285</sup>Leibniz Institute for Neurobiology, Magdeburg, Germany. <sup>286</sup>Division of Molecular Medicine, John Hunter Hospital, New Lambton Heights, NSW, Australia. <sup>287</sup>General Psychiatry, Institute of Mental Health, Singapore, Singapore. <sup>288</sup>Chalfont Centre for Epilepsy, Chalfont-St-Peter, UK. <sup>289</sup>Stanley Center for Psychiatric Research, Broad Institute, Boston, MA, USA. <sup>290</sup>Department of Medical and Biological Psychology, University of Bergen, Bergen, Norway. <sup>291</sup>Department of Psychiatry and Neuroscience Institute, University of Cape Town, Cape Town, South Africa. <sup>292</sup>SAMRC Unit on Risk & Resilience in Mental Disorders, University of Cape Town, Cape Town, South Africa. <sup>293</sup>Department of Psychiatry, Leiden University Medical Center, Leiden, Netherlands. <sup>294</sup>Psychiatry, Neurology, Neuroscience, Genetics, Johns Hopkins University, Baltimore, MD, USA. <sup>295</sup>Centre for Advanced Imaging, University of Queensland, Brisbane, QLD, Australia. <sup>296</sup>Center for Sleep and Cognition, Yong Loo Lin School of Medicine, National University of Singapore, Singapore, Singapore. <sup>297</sup>Department of Neurology, University of Pittsburgh School of Medicine, Pittsburgh, PA, USA.
- \*Corresponding author. Email:** [katrina.grasby@qimrberghofer.edu.au](mailto:katrina.grasby@qimrberghofer.edu.au) (K.L.G.); [njahansh@usc.edu](mailto:njahansh@usc.edu) (N.J.); [jason\\_stein@med.unc.edu](mailto:jason_stein@med.unc.edu) (J.L.S.); [pthomp@usc.edu](mailto:pthomp@usc.edu) (P.M.T.); [sarah.medland@qimrberghofer.edu.au](mailto:sarah.medland@qimrberghofer.edu.au) (S.E.M.)
- †These authors contributed equally to this work.  
‡These authors contributed equally to this work.  
§These authors contributed equally to this work.  
¶Consortium authors are listed in the supplementary materials.

#### SUPPLEMENTARY MATERIALS

[science.sciencemag.org/content/367/6484/eaay6690/suppl/DC1](https://science.sciencemag.org/content/367/6484/eaay6690/suppl/DC1)  
Materials and Methods

Supplementary Text  
Consortium Authors  
Additional Cohort Information  
Supplementary Acknowledgments  
Figs. S1 to S11  
Tables S1 to S20  
References (70–109)

[View/request a protocol for this paper from Bio-protocol.](#)

16 July 2019; accepted 10 February 2020  
10.1126/science.aay6690

Use of this article is subject to the [Terms of Service](#)

---

*Science* (print ISSN 0036-8075; online ISSN 1095-9203) is published by the American Association for the Advancement of Science, 1200 New York Avenue NW, Washington, DC 20005. The title *Science* is a registered trademark of AAAS.

Copyright © 2020 The Authors, some rights reserved; exclusive licensee American Association for the Advancement of Science. No claim to original U.S. Government Works

Use of this article is subject to the [Terms of Service](#)

---

*Science* (print ISSN 0036-8075; online ISSN 1095-9203) is published by the American Association for the Advancement of Science, 1200 New York Avenue NW, Washington, DC 20005. The title *Science* is a registered trademark of AAAS.

Copyright © 2020 The Authors, some rights reserved; exclusive licensee American Association for the Advancement of Science. No claim to original U.S. Government Works